

**Stratigraphic Report of Phase 2 Excavations,
A1/N1 Newry-Dundalk Link Road,
Area 13 Site 121**

Townland: Aghnaskeagh
Parish: Ballymascanlan
County: Louth
Country: Republic of Ireland
Chainage: Chainage 12400-12500
NGR: 307162E, 312036N
Director: Sinclair Turrell
Submitted: July 2007

Contents

Tables	2
Figures	2
Plates	2
<i>Abstract</i>	3
1 Description of the Site and Location	4
1.1 Introduction	4
1.2 Site description	4
1.2.1 Topography.....	4
1.2.2 Geology	5
1.2.3 Archaeological and historical background	5
2 A Description of the Works Carried Out.....	12
2.1 Reason for the excavation.....	12
2.2 Excavation methods.....	12
2.2.1 Phasing	12
2.2.2 Desk top study	12
2.2.3 Phase 1 archaeological testing.....	12
2.2.4 Phase 2 archaeological excavations.....	13
2.2.5 Health and safety documents.....	15
2.2.6 Staff involved	15
3 Excavation Records-Phase 2	16
3.1 Results of the excavation.....	16
3.1.1 Agricultural features.....	16
3.1.2 Natural features	18
3.1.3 Archaeological features	18
3.2 Summary	20
4 Discussion and Conclusion.....	21
5 Recommendations	22
5.1 Finds	22
5.2 Samples	22
5.2.1 Macrobotanical analysis	22
5.2.2 Microbotanical analyses: pollen and phytolith.....	22
5.2.3 Radiocarbon analysis.....	22
6 Quantification of the Materials and Records.....	23
6.1 Quantity of the record.....	23
6.1.1 Context sheets.....	23
6.1.2 Miscellaneous written records	23

7 References	24
Appendix 1 Context list.....	26
Appendix II Finds list.....	36
Appendix III Sample List	37
Appendix IV Photographic log.....	40

Tables

Table 1 Samples for radiocarbon analysis.....	22
Table 2 Records inventory.....	23

Figures

- Fig. 1 Location plan for A1/N1.
- Fig. 2 Extract of RMP Maps of Louth, Sheets 1 & 4. A1/N1 in red. Scale as indicated.
- Fig. 3 Location of Area 13 and Site 121 on RMP Map of Louth, Sheet 4. A1/N1 in red.
Scale 1:10,000.
- Fig. 4 Plan showing Area 13 and Site 121. Scale 1:2,000.
- Fig. 5a Plan of site, showing main features (stone sockets not shown) Site 121. Scale 1:500.
- Fig. 5b Detail of site 1:100.
- Fig. 5c Detail of Site. 1:100.
- Fig. 5d Detail of Site. 1:100.
- Fig. 5e Detail of Site. 1:100.
- Fig. 5f Detail of Site. 1:100.
- Fig. 6 Sections.

Plates

- Plate 1 Grid 100E 120N, pre-excavation.
- Plate 2 Grain dryer 031/122
- Plate 3 Probable grain dryer 219

Abstract

Louth County Council, the Roads Service NI (Department for Regional Development) and the National Roads Authority are currently proposing a Road Scheme, the A1/N1 Newry-Dundalk Road. The route consists of 14.2km of 2-lane dual carriageway with 5.7km of associated link roads from Cloghoge roundabout, south of Newry to the Ballymascanlan interchange north of Dundalk. As part of the road development, a number of archaeological and historic sites were within the construction zone of the road scheme and were determined eligible for excavation before the construction began.

The site was investigated at the request of the County Archaeologist who had identified a semi-circle of around 17 potential postholes, which may have formed part of a post-circle. Attention was also drawn to the knoll in the northeast corner of the site, which was thought to have a particular archaeological potential. As a result of excavation it became clear that the majority of features on site were stone sockets, with a particular concentration to the southeast of the site, where the subsoil was particularly stony. Other features related to agricultural activity, with a field boundary ditch and some plough furrows prominent. Two features with burnt or charcoal-rich fills were probably corn-drying kilns.

1 Description of the Site and Location

1.1 Introduction

The National Roads Authority (NRA) for the Republic of Ireland and Department for Regional Development (DRD) for Northern Ireland are the authorities in charge of the proposal to construct a new road between Newry and Dundalk. As part of the road works, Archaeological Development Services Ltd (ADS) was commissioned to perform an archaeological assessment along the proposed Link Road and to mitigate the impacts of any construction on archaeological resources. The following report details the results of the fieldwork at Site121 that followed the recommendations of the County Archaeologist.

The proposed scheme involves a 14 km route with 5.7 km of associated link roads (Fig. 1). Upgrading the key transport corridors and associated trunk road links will provide a strategic framework for infrastructure investment, improvement of public transport, future urban and economic development especially for large-scale sites to accommodate industry and commerce and assisting tourist travel around the region.

This report describes the results of excavations carried out at Site 121 between 15 November 2005 and 23 December 2005 in advance of groundwork. This fieldwork was interrupted for two weeks while health and safety issues surrounding access to the site were resolved. Staff of ADS carried out archaeological work on behalf of the developers under the direction of Sinclair Turrell. This section of the project occurs in Aghnaskeagh Townland, Ballymascanlan Parish, Co. Louth, Republic of Ireland at National Grid Reference 307162E, 312036N (centre point), Ordnance Datum (OD) of approximately 39m and road scheme chainage 12400 – 12500.

1.2 Site description

1.2.1 Topography

The existing landscape character of the study area is a result of previous glacial, geological and human impacts (Figs 1, 2 and 3)¹. The study area is contained within a mountainous backdrop known as the Ring of Gullion. Slieve Gullion defines the west extent of the study area and lies at the centre of the Ring of Gullion. To the north lies Camlough Mountain and Fathom Mountain. The east boundary is defined by the west edge of the Carlingford

¹ This information has been taken directly from the A1/N1 Newry-Dundalk Link Road Environmental Statement/Environmental Impact Statement Non-Technical Summary prepared by RPS Ireland Environmental Sciences

Mountains and specifically Black Mountain. The south edge of the Ring of Gullion is contained within the study area and includes Feede Mountain and Slievenabolea. Between the mountains of the Ring lies a broad gently undulating agricultural landscape. South of Feede Mountain the study area levels off gently undulating to Dundalk Bay.

This site was situated on a gentle south facing slope, with a distinct knoll in the northeast corner. (Figs 1-4). The boundary between Aghnaskeagh and Plaster Townlands ran across the site, curving round from east to west and running along the north slope of the knoll. A field boundary ditch bisected the east end of the site from northwest to southeast.

1.2.2 Geology

Vaughan in Buckley and Sweetman (1991, 8-10) indicates that the bedrock geology of the site area is composed of Silurian Greywacke. Silurian rocks were deposited in deep water in active tectonic zones. Each layer in the Silurian strata represents materials displaced and then redeposited by earthquakes, which would cause sediments to slump from the off shore slopes of the continental shelf that would then be deposited as a future greywacke bed.

1.2.3 Archaeological and historical background

The road follows a natural route way through mountainous terrain that may have been in use from the prehistoric period. There are numerous monuments (following) recorded near the route date from the Neolithic period to the 11th Century AD (Buckley and Sweetman 1991).

Previously known sites within 1km of the current site. A search of the “Archaeological Survey of County Louth” (Buckley and Sweetman 1991) and of the Record of Monuments and Places (RMP) shows that there are 3 known prehistoric and historic sites in the area. These include the following sites listed by their RMP number, the Buckley and Sweetman reference number (1991), location and their description (Fig. 3).

- RMP:** LH004-001 (Buckley and Sweetman 1991: 122 Survey No. 319)
Townland: Drumad
Parish: Ballymascanlan
Barony: Lower Dundalk
County: Louth
Country: Republic of Ireland
NGR: 307830E, 315510N
Description: Souterrain situated on a slight hummock on the W slope of valley. The souterrain consists of a drystone built, slightly corbelled passage (L 19m, W c. 1.3m, H c. 1.7m) curving gently ENE-W. A creep (L 0.7m, W 0.7m, H 1.1m) in the middle of the N wall of the passage gives access to a subrectangular chamber (L 3.8m, W 2.1m, H 1.5m).
- RMP:** LH004-002 (01), (02) (Buckley and Sweetman 1991: (01) Survey No. 174, (02) Survey No. 219)
Townland: Ravensdale Park
Parish: Ballymascanlan
Barony: Lower Dundalk
County: Louth
Country: Republic of Ireland
NGR: 308320E, 315560N
Description: (01) Stone circle (possible) eight regularly spaced stones enclosing an oval area (7 by 4m), reputedly exposed by Lord Clermont c. 1840 (*CLAJ* 1906, 96). The OS 25” sheet (1907) shows five stones, concentric with the circle to the E. The sites of four standing stones lie 40m SW of the monument. Tempest (*CLAJ* 1942, 128-32) suggests that the origins of the monument may be doubtful owing to the small area of the circle, the surface mobility of the stones and their regular spacing. This may be partly explained by the original lowering of the ground level around the stones to reveal them and their constant resettling by estate workers. Borlase (1897, vol 2, 421) records the location of the site, or one exactly similar, as being at Dromiskin. This was also a Clermont estate, and thus confusion may have arisen. The site has been suggested as part of landscaping by Lord Clermont, but equally may be part of a genuine prehistoric site, though Davies (*UJA* 1939, 13) does note that it does not conform to any known circle type.
NGR: 308290E, 315550N
Description: (02) Standing stone (possible) (*CLAJ* 1942, 130-2).
- RMP:** LH004-128 (Buckley and Sweetman 1991: Survey No. Not Listed)
Townland: Ravensdale Park
Parish: Ballymascanlan
Barony: Lower Dundalk
County: Louth
Country: Republic of Ireland
NGR: 308110E, 315360N

Description: Court tomb no further information.

Sites known from the current project. Current work has identified six archaeological sites within 1km of this location (Figs 2 and 3). Positive results of trial pits excavations along the route were reported in 2005 (McConway and Dawkes 2005a). These are:

Site 111 is an extensive site, lying next to recorded monument (LH 004:041) a Megalithic Tomb. F18/001 lay to the immediate north of a beech-lined avenue and in the immediate vicinity of a recorded monument, a 'megalithic structure'. The area was noticeably stony underfoot and many larger boulders protruded through the dense grass cover.

This feature consisted of a stony surface measuring approximately 30m north to south by 25m and was identified lying immediately under the topsoil and overlying subsoil. These stones were embedded within a friable mid brown/grey soil and appeared delineated with an interrupted kerb of larger boulders. F18/001 has been interpreted as a collapsed cairn associated with the recorded megalithic tomb. It is likely, given local tradition that the area may also have been used as an infant burial ground.

In the area to the immediate south of the beech lined avenue it was noted that large boulders protruded through the grass in the northwest corner of the field, although these may be associated with collapse from a stone field wall. Three areas of archaeological deposits were identified in F17. F17/001 consisted of an isolated spread of grey/brown silt; F17/F002 was a roughly circular and measured 3.5m in diameter. F17/011 was a spread of black charcoal rich silt and burnt and heat shattered stone that was uncovered 75m to the southwest of F17/001. As uncovered, this deposit measured 3.5 by 2.5m and continued into both the north and south baulks. This deposit has been interpreted as being burnt mound or *fulachta fiadh* material. F17/003 was a circular feature that was uncovered around 27m east of F17/001 and lay within a small cluster of archaeological deposits. It consisted of a spread of orange/brown redeposited subsoil identified as F17/004, which itself measured 3.3m in diameter. A fifth feature was identified within this cluster. F17/006 was an irregular feature consisting of charcoal rich black silt F17/005, at least 5m east to west and continuing into the west baulk.

Site 112 Thirteen features of archaeological potential were uncovered on this site of which six were discovered to be of natural origin, formed either by root action or the removal of stones embedded in the subsoil. Of the remainder, two linear features and two pits could be dated to the recent past and were likely to be the result of farming activities. The remaining features, a stake-hole and the large pit formed by two smaller pits were undatable but, given the nature of

the surrounding features, there is no reason to believe that they are not contemporary. The excavated features are not of any archaeological significance, nor do they form part of a more extensive archaeological landscape.

Site 113: (Fig. 4) This site was identified as “an extensive spread of charcoal-enriched black silt and burnt stone”. This measured up to 33m (north to south) and 15m (east to west) and was interpreted as “evidence for a large fulacht fiadh, or burnt mound with evidence for additional or satellite burnt mounds within Field 9”.

Recent excavations have revealed that although burnt mound material was present at the site, along with associated pits and a possible well, only secondary traces of burnt mounds remained. This was probably due to later agricultural activity in the 19th Century when the ground was levelled, drained and ploughed. This probably occurred at a time when land pressure increased.

No troughs or hearths, feature types often associated with burnt mounds, were found during the course of the excavation, however a subcircular unlined well dug to a natural spring would attest to the possibility that the burnt mound material found on the site are the remains of fulacht fiadh. It is thought that the burnt mound material found at the site may be the truncated remains, with material continuing under the west baulk towards the Ballymascanlan Stream, of three burnt mounds, probably dating to the Bronze Age.

It is hoped that charcoal samples taken from the burnt mound material will firmly establish the date of the archaeological activity found on the site.

Site 114. Two areas of archaeological deposits were uncovered near Thistle Cross during Phase 1 testing along the route of the A1/N1 Newry-Dundalk Link Road. The first area was identified as a number of charcoal-rich deposits and the second, 40m northwest of this, consisted of two sub rectangular features and two irregular spreads. Two cuttings each measuring 20 x 20m were opened up by mechanical excavator. Cutting A was later extended to 30 by 33m and two sondages, each 12.5 by 2m, excavated to the west of the site in order to explore its limits here. Cutting B, was extended by 3 by 20m to the south and 10 by 15m to the west.

Cutting 114A

The site was located on well-drained soil and situated on a small plateau on a gentle, east-facing slope of a low hill. The main features here were a cluster of three rectangular structures, together with a variety of pits and small miscellaneous features. The site had been disturbed by recent agricultural activity, mainly in the form of cultivation furrows.

Structure 1, probably a dwelling house, was orientated east-west, measured 8 by 7m and was defined by two narrow slot trenches running parallel, some 6m apart, with three pairs of large, regularly spaced, external postholes. There were no slot trenches associated with the gable ends of this structure, that to the east being represented by a number of smaller postholes. The gable end was less well defined to the west but may have been represented by a line of stones. There were two large postholes in the interior aligned with the central pair of external posts and it may be that the structure was partitioned here. Two small postholes in the southwest corner of the structure may be doorjambs, showing that there was an entrance here. The slot trench was narrow and several stake holes were found within it, indicating that the walls were probably of wattle construction. The fill of the slot trench contained much charcoal and the sides of the trench appeared oxidised in places, suggesting that the structure may have been destroyed by fire. The southeast corner of this structure had been disturbed by the test trench and an engineer's test pit had been cut into the centre of the structure.

Structure 2, also probably a house, was orientated north-south, measured 8.5 by 6.5m and was situated 3m north of Structure 1. It was defined on three sides by a slot trench, up to 0.6m wide, filled with a packing of redeposited natural subsoil and stones. Several depressions in base of the packing indicated the former presence of posts and it is likely that this structure had walls of upright planks. There was no slot trench on the north side of the structure, which was defined by two large corner postholes and some smaller central ones. There were some postholes more or less orientated on the centre line of the structure, suggesting a row of supporting posts here. There was no evidence for an entrance but, since there is a continuous and well-defined slot trench on the other three sides, this is likely to have been to the north.

Structure 3, measuring 6 by 4m, was situated 1.5 west of Structure 1, on virtually the same alignment. It was defined on three sides by a slight slot trench with postholes in the corners. There appeared to be a central partition, represented by a posthole at the midpoint of the long side connected to another posthole by a short length of perpendicular slot trench, with a further posthole an equal distance beyond this. There was no slot trench on the north side of this structure. This structure, perhaps contemporary with Structure 1, may have been a shed or byre, with an internal partition dividing it into two stalls.

There was a group of pits to the west of these structures, including two circular pits with a charcoal-rich fill, which may have been cooking pits. Just north of these were two large, deep pits, with an homogenous silty fill, perhaps storage pits. There were a number of small pits, stake holes and short lengths of slot trench between Structures 1 and 2, probably indicating some sort of domestic activity in this area. A third group of pits was situated to the south and south east of Structure 1. Some of these may relate to prehistoric activity, although others may be connected with modern cultivation.

There were a series of parallel cultivation furrows criss-crossing the site. The main band of furrows ran north-south, although east-west furrows were also noted. These furrows were quite variable in width and depth and this, together with the presence of some large boulders embedded in the subsoil, suggested lazy bed cultivation rather than ploughing. In addition to these furrows, the two sondages also contained several irregular, loamy spreads, the result of tree root activity.

Finds included several sherds of prehistoric pottery together with some flints flakes, including a possible thumbnail scraper, and the bulk of the features here are likely to be Neolithic in date. It is not possible at present to reconstruct the particular phases of activity, although it may be that Structures 1 and 3, at least, are contemporary.

Cutting 114B

This site was located to the west of Site 114A, situated on gently sloping ground at the foot of a slope. There was a linear ditch running east-west between the two baulks for 33.5m, with two cultivation furrows running parallel to the west. Around halfway along the length of this ditch was another, perpendicular to the first, running for 7m into the south baulk. East of the angle formed by these two ditches was a smaller linear feature running parallel to the main ditch. There was a faint, right-angled return west of this feature, which seemed to indicate some small structure, within the angle of the larger ditches. A corresponding return was not present to the east of the feature, however, although the test trench here had cut into the subsoil and may have removed any remaining traces. Both the larger and smaller east-west ditches appeared to cut through a stone spread to the east of the cutting. Subsequent excavation of the larger ditches produced post-medieval pottery and a flat, metal knife blade.

North of these ditches were a series of oval or circular features, in a range of sizes, some with stony, silty fills, with some of the smaller ones having charcoal-rich fills. Excavation showed that some of these are probably natural features, while others seem to be stone sockets resulting from former field clearance, the furrows indicating that cultivation had formerly

been attempted here. Some of the smaller features seem to have been deliberately cut, perhaps as postholes, and a small fragment of coarse pottery indicated that these may be archaeological in nature. However, no structure could be inferred from them.

An hourglass-shaped feature in the northeast corner of the cutting proved to be some sort of oven, or grain dryer, the deeper, north, chamber containing much charcoal, with the surrounding subsoil displaying signs of oxidation. It is not clear at present exactly what activity was being carried on here, although examination of the soil sample taken from this feature may provide some indication.

It seems, then, that the ditches are post-medieval field boundaries, possibly with a light structure, such as a shed or a byre, in the corner of one of these fields. The date of the oven/dryer is uncertain, these simple structures being in use throughout the medieval period and beyond. Some of the smaller pits here may indicate that some, earlier, possibly prehistoric, activity also took place here.

Site 115. A small group of archaeological deposits was uncovered by testing within a 20m stretch of the road along the south limits of Field 6. This group consists of a linear pit, F6/001, possibly the terminal of a gully. The feature was filled with grey silty clay F6/002. Other features in the local area included a sub-circular pit F6/003 filled with charcoal-enriched black silt F6/004 and a sub circular pit F6/005 filled by charcoal-enriched black silt F6/006. Two other features were uncovered 25 and 45m north of this group. These were a sub-circular pit F6/007 filled with charcoal flecked grey silt F6/008 and a sub-circular pit F6/009 filled with stony charcoal-enriched black silt F6/010.

Site 120. (Fig. 4) Archaeological testing at this location uncovered probable burnt mound or *fulachta fiadh* material and a smaller deposit. Two isolated features were uncovered during testing in Field 14, along the north limits of Area 13. This consisted of a sub-rectangular pit F14/001 that measured 7m north-south and 5.5m east to west. The pit fill F14/002 was charcoal rich silt and burnt stone. The second feature was a sub-circular pit F14/003 that measured 1.4m in diameter and was filled with charcoal rich black silt F14/004.

2 A Description of the Works Carried Out

2.1 Reason for the excavation

The principal objectives of the Roads Service in implementing the scheme are to improve the conditions for road users by reducing journey times between the major commercial centres, together with an improvement in road safety. The specific objectives are:

- To contribute to the improvement of the Regional Strategic Transport Network and major transport links with Great Britain and the Republic of Ireland;
- To reduce vehicle operating times and costs;
- To facilitate freight transport;
- To improve road safety and improve pedestrian and cycle access and safety.

2.2 Excavation methods

2.2.1 Phasing

The road works have been divided into 2 phases: Phase 1 included (a) the archaeological evaluation of known sites, possible sites and areas of archaeological potential and (b) the recording and evaluation of standing buildings/structures at identified locations. Phase 2, reported here, includes the resolution of any sites identified by the works.

2.2.2 Desk top study

A desktop study of archaeological and cultural heritage sites was reported in the Environmental Impact Statement for the project (RPS 2002a, 236; 2002b). A particular emphasis was paid to sites with 1km of what was then the proposed route alignment.

2.2.3 Phase 1 archaeological testing

Area 13 is in a zone of fertile soils within an archaeologically sensitive landscape in close vicinity to a number of known archaeological sites (Figs 2 and 3; Section 1.2.3). This area was considered to have high archaeological potential and was investigated and evaluated under Phase 1 of the Contract by means of test excavation.

The Phase 1 report discusses the archaeological findings within Area 13, at Aghnaskeagh townland, between road scheme chainages 12400 – 12500. The testing was carried out under project sub number A002/003 in November 2004 (McConway and Dawkes 2005a).

The purpose for and the methodology employed in the Phase I testing included:

- To fully expose, investigate, record and resolve archaeological deposits uncovered in and all deposits associated with these.
- Resolution of the archaeological features described above was carried out by a licenced director, a supervisor, two assistants and four general operatives.
- A 100 by 40m area was appropriately opened over the features under archaeological supervision to the latest archaeological horizon or to the upper surface of natural geology, whichever occurs first. The area will be manually cleaned and examined for further archaeological deposits.
- All archaeological deposits were surveyed in to a site grid and in relation to their position on the road.
- All deposits were recorded and investigated by methods appropriate to their nature and complexity using best archaeological practice.
- Methods used included sectioning, planning and photographing the deposits, investigating the stratigraphic relationship with other deposits if appropriate, compiling a written record of the deposits via a context sheets

As it was determined likely that additional subsurface archaeological deposits would be associated with the known features it was also recommended that an appropriate area around each feature be topsoil stripped. All features exposed from the stripping were to be fully investigated. If it became apparent that these features form part of a more extensive archaeological landscape then it was recommended that an appropriate area be opened up on plan in order to fully investigate and record any discovered features.

2.2.4 Phase 2 archaeological excavations

Recording strategy. Recording was by means of ‘best archaeological practise’. The primary records of these excavations consist of written and drawn records, photographs, survey data, finds and samples. The stratigraphic record was primarily made on context record sheets, of the standard type used by ADS. These are supplemented by information from the site diary and notebooks. Field surveying equipment consisted of an Ashtech DGPS surveying suite, which allowed real-time data collection with horizontal accuracy of 0.005m +1ppm and vertical accuracy of 0.010m +2ppm.

All Phase 2 archaeological excavations were carried out in accordance with the Specification for Archaeological Rescue Excavation on Known Sites document (ADS 2005). Field methods included:

- An appropriately sized area around each of the deposits was fenced off and access to these areas by machinery and personnel denied until they have been resolved.
- The removal of topsoil was by judicious use of a machine fitted with a toothless bucket under the constant supervision of a suitably qualified archaeologist.
- All trenches were excavated to the latest archaeological horizon or to the upper surface of natural geology, whichever occurred first. If archaeological features were revealed these deposits were in the first instance, cordoned off using high visibility tape and access to these areas by machinery denied.
- All deposits were hand investigated using methods appropriate to their composition, nature and date and time was allowed for the archaeologist to undertake the appropriate level of recording.
- The level of recording depended on the nature and extent of the archaeological remains encountered. All deposits were recorded on plan (in relation to the site grid), photographed and if appropriate, their location surveyed in advance of hand excavation.
- Excavation of deposits was carried out by sectioning using methods appropriate to their composition and nature.
- Contexts were sampled for palaeobotanical material, radiocarbon dating, soil micromorphology, petrology, wood identification, etc.
- All sections and cut features were photographed and drawn.
- The position of all finds and samples were recorded in three-dimensions (when practicable) in relation to the site grid.
- Sampling strategies depended upon the dimensions, make up and complexity of the archaeological remains encountered.
- A day book was maintained where all archaeological features were recorded in writing utilizing ADS context sheets, scaled field illustrations and by both slide and digital photography.
- All finds were logged according to context, bagged and catalogued.
- A contract conservator was on call if necessary.
- All finds are stored in our post excavation unit at Kells, Co. Meath and will ultimately be stored in whatever facility the State will provide.
- Excavation or preservation by record was carried out on archaeological deposits that will be impacted on by the construction of the road scheme.

2.2.5 Health and safety documents

It is the policy of ADS to comply with the Health & Safety at Work Acts and the Construction Safety, Health & Welfare Regulations and to ensure so far as reasonably practicable the safety, health and welfare of all employees whilst at work, and to provide such information, training and supervision needed for this purpose. To comply with these acts and regulations the works were conducted following the procedures and principles laid out in the company health and safety document (ADS 2003). Special attention to health and safety will be paid in areas close to rivers, streams, woodland, marshy ground and overhead power lines. ADS can confirm that the excavation crews all hold a valid safe pass certificate.

2.2.6 Staff involved

The director (Sinclair Turrell) would like to acknowledge site supervisor Patricia Ryan, site assistants Peadar Quine, Tara Clark, Michael Chosson, Jakob Kacprzak, Dominik Olszewski, John Dougan and Carles Spana, Archaeologists Rachel Flynn and Reginald Campbell, as well as General Operatives John Clarke and Raymond Balfe.

3 Excavation Records-Phase 2

Testing in Area 13 was carried out under number A002. Five areas of archaeological potential were identified (McConway and Dawkes 2005a). The site was investigated at the request of the County Archaeologist who had identified a semi-circle of around seventeen potential postholes, which may have formed part of a post-circle. Attention was also drawn to the knoll in the northeast corner of the site, which was thought to have a particular archaeological potential.

3.1 Results of the excavation

After the site had been cleaned by hand down to the very stony, sand and gravel subsoil **(002)** a large number of features were visible. The line of the townland boundary ditch could be seen curving across the site from near the east corner and skirting around the north side of the knoll before exiting near the west corner. In addition, there was a large field boundary/drain a short distance from the northeast edge of the site and running parallel to it. A second, smaller field boundary/drain was noted running from near the north corner of the site, joining the first about half way along its length. Towards the southeast boundary were a series of indistinct, parallel linear features, which seemed to be the remnants of plough furrows. There were also a great number of loamy features scattered across the site. These were often small and more or less circular, with a dense concentration towards the east side of the site but with no obvious structural patterns in evidence. Excavation showed that the features here could be grouped in to the three broad categories of agricultural, natural and archaeological features (Fig. 5a).

3.1.1 Agricultural features.

Several rather indistinct, parallel linear features were noted, particularly towards the south-east side of the site. These were interpreted as remnants of former plough furrows and some of them were excavated in order to confirm this interpretation. **(073)** was 4.6m long, around 0.64m wide and 0.24m deep, with a gentle rounded profile. The fill **(072)** was a loose, dark orange-brown, sandy silty loam, which contained some occasional small to medium sized stones. This furrow ran east to west and appeared to cut **(124)**, a stone socket. Some six metres south of this, offset to the east were three further furrows, running parallel to **(073)** and to each other. These three features were equidistant from each other with a gap of two metres between them. The northernmost, **(088)**, was 6m long, between 0.42m and 0.9m wide and around 0.1m deep, with a shallow, irregular profile. The fill **(087)** was a moderately compact, brown loam, which contained some occasional stones. Just south of this was **(112)**, around 7m long, 1m wide and 0.05m deep, with an irregular profile similar to that of **(088)** and also filled

with a moderately compact, brown loam with some occasional stones **(111)**. South of this in turn was **(133)**, around 7m long, 0.61m wide and 0.16m deep, with a more or less rounded profile and again filled with moderately compact, brown loam containing some occasional stones **(132)** (Fig.6). The orientation, spacing, profile and fills of these three furrows all show that they are the result of the same ploughing action. The three furrows spanned a distance of 6m; with **(088)** a further six metres to the north, suggesting that it also belongs to this phase of activity and that two furrows between the two sets can no longer be traced.

A section was also excavated through the larger field boundary ditch **(247)**, in order to confirm the interpretation. This feature ran across site in a northwest to southeast direction for approximately 60m. At the section, it was 2m wide and 0.8m deep, with steep sides and a rounded base. The earliest of the three fills was found only along on the northeast side of the ditch and consisted of moderately compact, mottled light grey and orange, silty sand **(246)**, 0.94m wide and 0.14m thick, representing the initial silting phase. Above this was the main fill, a very stony, moderately compact, dark brown silty loam **(245)**, which was 1.8m wide and 0.7m thick. The uppermost fill was moderately compact, orange/dark brown silty loam **(244)**, 2m wide and 0.1m thick (Fig.6).

Most of the features investigated turned out to be stone sockets. These will not be described at length here but their details are given in the list of contexts (Appendix I), which can be found at the end of this report. Features interpreted as stone sockets, with fills in parentheses are as follows: **003** (006) and (007); **004** (008); **005** (010), (011) and (012); **009** (013); **014** (015); **021** (016), (019) and (020); **025** (028); **027** (026); **029** (024); **030** (023); **032** (033); **037** (034); **038**, (035); **039** (036); **040** (070); **041** (069); **042** (043, (074); **044** (045); **046** (047, 097); **048** (049); **059** (060); **062** (067); **066** (065); **068** (071); **076** (052); **077** (078); **079** (080); **084** (054); **085** (061); **086** (081); **089** (093); **094** (053); **095** (090); **096** (055); **098** (109); **099** (110); **100** (118); **101** (117); **104** (050); **105** (106); **107** (008); **113** (114); **116** (115); **119** (056); **120** (057); **123** (121); **124** (058); **125** (126); **128** (134); **129** (135); **130** (136); **131** (127); **137** (138); **142** (143); **144** (140); **147** (139); **148** (149); **150** (151); **152** (153); **157** (155); **159** (158); **161** (160); **163** (164); **165** (166); **170** (169); **172** (186); **173** (187); **175** (188); **176** (221); **180** (179) and (220); **189** (181); **190** (182); **191** (183); **195** (197); **208** (201); **209** (202); **210** (203); **207** (206); **214** (171); **215** (200); **223** (224); **231** (230) and (235); **232** (227); **234** (233); **239** (238); **241** (240); **243** (242).

The sockets ranged in size from 0.1 to 0.9m with the great majority being around 0.2 to 0.5m. They were mainly sub-circular or sub-oval in shape, many distinctly angular, often triangular, with rounded corners. Most were very shallow features, distinguished by gently sloping sides

and a loamy fill. Although scattered across the site, there was a dense concentration in the southeast part of the site, around grid 100E 120N (Plate 1). This concentration is explained by the fact that the subsoil here is noticeably stonier than that elsewhere on site. The larger sockets may have been created by removal of stones before the plough cultivation that is evidenced by the furrows, which run across the site and were concentrated to the southeast. The vast majority of the sockets would have been created by the dislodgement of stones during the process of ploughing itself, the fact that the furrows are lightly cut into the subsoil showing that ploughing disturbed its surface. The machine stripping of the topsoil down to subsoil, which took place prior to excavation, may also have created stone sockets.

Several sockets **(030)**, **(029)**, **(042)**, **(044)**, **(076)**, **(077)**, **(105)**, **(113)**, **(163)**, **(165)**, **(172)**, **(173)** and **(215)** contained sherds of post-medieval or modern pottery in their fills. Metal was found in the fills of **(042)** and **(157)**, glass in **(165)**, coal in **(038)**, brick in **(157)** and animal bone in **(076)**, **(208)** and **(163)**. In contrast to this picture of modern activity, some flint fragments were found in the fill of **(081)**, these almost certainly originating in the surrounding ploughsoil but perhaps hinting at some prehistoric presence in the general area.

3.1.2 Natural features

Cut **(145)** was a sub-oval feature, 0.36 by 0.20m and 0.08m deep, with sloping sides, an irregular base and a dark brown, loamy fill **(146)** that was probably the result of tree root activity. Cut **(211)**, which was situated just south of the townland boundary, near the northwest corner of the site, seemed to be the remains of an animal burrow. It was oval in plan, 0.78 by 0.62m and 0.34m deep, with a U-shaped profile. It had two fills, the lower a loose black/grey silty sand **(205)** and the upper a loose dark grey sandy silt **(204)**.

3.1.3 Archaeological features

Near the southwest corner of the site was a figure-of-eight shaped feature **(031)/(122)**, 2.13m long and orientated southwest to northeast. Excavation showed that this feature comprised two conjoined sub-circular pits (Plate 2). The larger pit **(031)**, to the northeast, was around 1.2m in diameter and 0.35 deep, while the smaller element **(122)** had a maximum diameter of 1m and a depth of 0.32m. The lower of the two fills was loose, charcoal-rich, black/brown sand, which contained occasional small stones **(022)**. This mainly occurred in **(031)**, where it was 0.21m thick and the main fill. In **(122)** this deposit formed a thin basal layer, 0.03m thick and appearing to have washed in from **(031)**. Sealing this deposit was a layer of loose, brown/grey sand containing a few small stones **(018)**, which was around 0.14m thick in **(122)** and 0.04m thick in **(031)** (Fig. 6). This feature appears to be a corn-drying kiln, with the thick,

charcoal-rich fill of **(031)** suggesting that this was the stoke hole and that **(122)** was the drying chamber.

Towards the northeast edge of the site was another feature **(219)** characterised by evidence of burning. This feature was 1.5m long, a maximum of 1m wide, kidney-shaped in plan and orientated southwest to northeast (Plate 3). It had a maximum depth of 0.35m, with gently sloping sides, except to the northwest where it was steep sided. The lowest fill was a 0.18m-thick deposit of loose, brown silty clay, which contained some large stones **(229)**. Above this was a 0.24m-thick-burnt deposit of loose, brownish orange silty clay with occasional charcoal flecks **(216)**. This layer was interrupted by a 0.21m-thick dump of compact orange clay **(199)**. These deposits were overlain in part by a 0.06m-thick layer of loose, brown silty clay, with some charcoal flecks **(217)**, in the centre of the feature and a 0.12m-thick, loose, black silty clay, containing frequent large chunks of charcoal **(198)**, along its southeast edge. The top of the feature appeared to have been cut on the northeast side by a plough furrow, filled with loose grey/brown silty clay **(228)** (Fig. 6). The charcoal-rich and burnt fills suggest that this feature may be another corn-drying kiln, similar to **(031)/122)**, but disturbed, perhaps by ploughing. This interpretation is strengthened by the fact that it is on the same alignment as **(031/122)**, the northwest edge has the same 'waisted' appearance and the contours of the base suggest that there may have originally been two conjoined chambers here as well.

A small number of features may represent postholes. **(064)** was circular, 0.34m in diameter and 0.25m deep with near vertical sides and a flat base. The fill was loose, mottled, grey/orange sandy silt with frequent small stones **(051)**, **(196)** and **(225)** were two adjacent features, situated just northeast of the boundary ditch **(247)**. **(196)** was sub-circular in plan, 0.39 by 0.43m and 0.37m deep, with vertical sides and a rounded base. The lower fill was a 0.32m-thick, friable grey/brown silt which contained frequent stones and some plant roots **(213)** and above this was a 0.08m thick, friable dark brown loam, with occasional pebbles and some plant roots **(194)** (Fig. 6). **(225)** was circular, 0.48m in diameter and 0.29m deep with steep sides and a slightly rounded base. The fill was a friable, grey/brown loam with a few small stones and some plant roots **(222)**. This fill also contained some fragments of wood. **(168)** was situated some 9m southeast of these, also close to ditch **(247)**. It was sub-rectangular, 0.57 by 0.42m, 0.32m deep, with vertical sides and a sloping base. The fill was a moderately compact, dark brown/orange, stony, silty loam **(167)**. The profiles of all these features distinguish them from the numerous stone sockets elsewhere on site. The wood in the fill of **(225)** suggests that it, at least, may simply be a modern posthole. Since **(225)** and **(168)** run parallel, close to the field boundary ditch, it may be they represent a fence along the edge of the field.

The only other feature on site which may be archaeological in origin was a, possible stakehole (156). This was circular, 0.07m in diameter and 0.07m deep with steep sides and a narrow, rounded base, filled with charcoal-rich, brownish grey/black silty clay (154). This axis of this feature was strongly inclined towards the southeast.

3.2 Summary

The vast majority of features here were stone sockets, a consequence of the extremely stony nature of the subsoil. There is further evidence of agricultural activity in the form of plough furrows. The two larger features were probably corn-drying kilns.

4 Discussion and Conclusion

Apart from some stray pieces of flint, found in the fill of a stone socket, there is no evidence here for any prehistoric activity. The features which were initially thought to be an arc of postholes, forming part of a possible timber circle were revealed to be a concentration of very shallow, topsoil-filled stone sockets. The features on the low knoll, to the northwest of the site were also found to be stone sockets. All the evidence here, therefore, seems to relate to modern agricultural activity.

The most interesting features here are the two possible grain dryers. **(031/122)**, to the southwest of the site, is very similar in size and form to a feature found on Site 114B. That feature also consisted of two conjoined chambers, the larger one displaying evidence of burning. **(219)**, to the northeast of this site, seems to have been partly damaged and although the interpretation is less certain, it seems likely that this is also a grain dryer. The date of these two features has not been established and such features were in use over a long period of time. It seems likely, however, that in this case they are post-medieval in date and perhaps related to the rest of the agricultural activity in evidence here.

5 Recommendations

5.1 Finds

With the exception of a small piece of flint, all finds recovered from the excavations (Appendix II) were post-medieval in date and there is no need for any specialist analysis. Should additional artefacts, however, be recovered from the processed samples they will be analysed by the appropriate specialists.

5.2 Samples

5.2.1 Macrobotanical analysis

Burned macrobotanical materials are best recovered through flotation of a soils sample. In the case where unburnt materials are suspected in the sample, they can be picked from the overall sample before flotation (Appendix III). If the intent is for the recovered remains to be used for radiocarbon analysis then all botanical materials recovered from the samples should undergo species identification before such analysis. In particular flotation of the deposits from the probable corn-drying kilns [feature **(031)** Samples <15>, <16> and <23>; feature **(219)** Samples <103>-<106>] may produce carbonised grain, thus confirming the interpretation and providing evidence of which grain was being dried.

5.2.2 Microbotanical analyses: pollen and phytolith

Several types of analyses of samples that are botanic in origin can yield information that is important to the understanding or confirmation of the function of a site or its features. At this site, materials for analyses can be recovered as sub samples from the bulk soil samples. The site director has selected three samples possible for microbotanical analyses (above). These are Sample <15> from **(018)**, Sample <104> from **(199)** and Sample <102> from **(219)**, which are fills of the two probable grain dryers.

5.2.3 Radiocarbon analysis

The site director suggests that the two samples listed (below) are sent for radiocarbon analysis. These are from charcoal-rich deposits in the two possible grain dryers. No date could be established for these features, although a post-medieval date seems most likely.

Table 1 Samples for radiocarbon analysis

Context	Sample No.	Feature	Reason for sample
022	<16>	031	Charcoal. Dating evidence for grain dryer.
198	<106>	219	Charcoal. Dating evidence for grain dryer.

6 Quantification of the Materials and Records

6.1 Quantity of the record

The site archive comprises those items listed in Table 2:

Table 2 Records inventory

Form	Number (after voids)
Context Sheets	223
Photographs (Rolls)	9 Colour Print, 10 Colour Slide
Sections and Plans	103 sections, 4 plans
Finds	29
Samples	104

6.1.1 Context sheets

223 context sheets that are archived at the ADS Dublin facility and are in queue for entry into the project database.

6.1.2 Miscellaneous written records

Site Diary/ Daybook (with supplementary notes and correspondence). Miscellaneous administrative notes and correspondence.

7 References

ADS

- 2003 Archaeological Development Services Ltd Health and Safety Manual. Compiled by Fergus Cooney.
- 2005 Archaeological Method Statements to facilitate Phase 2 works On the A1/N1 Newry – Dundalk Link Road Project Number A002/000, April 2005.

Borlase, W.

- 1897 *The dolmans of Ireland*. London.

Bowen, P.

- 2006 *Final Report of Excavations Along the A1/N1 Newry-Dundalk Link Road Area 15, Site 118*. Archaeological Development Services Ltd for Department for Regional Development, Roads Service. Belfast.

Buckley, V. and P. Sweetman

- 1991 *Archaeological Survey of County Louth*. The Office of Public Works, Dublin.

Dawkes J., and P. Bowen

- 2006 *Summary Report of Phase 2 Excavations, A1/N1 Newry-Dundalk Link Road, Area 16 Site 116*. Archaeological Development Services Ltd for Department for Regional Development, Roads Service. Belfast.

Louth County Council

- 1997 Louth County Development Plan. Louth County Council, Dundalk.

McConway, L. and G. Dawkes

- 2005a *A1/N1 Newry-Dundalk Link Road Volume 1 Archaeological Assessment Area 13*. Archaeological Development Services Ltd for Department for Regional Development, Roads Service. Belfast.
- 2005b *A1/N1 Newry-Dundalk Link Road Volume 1 Archaeological Assessment Area 14*. Archaeological Development Services Ltd for Department for Regional Development, Roads Service. Belfast.
- 2005c *A1/N1 Newry-Dundalk Link Road Volume 1 Archaeological Assessment Area 12*. Archaeological Development Services Ltd for Department for Regional Development, Roads Service. Belfast.

Morris, H.

1908 Mottes and their origins, *CLAJ* II, 41-4.

O' Connor, J.

2005 *Final Report of Excavations at the A1/N1 Newry to Dundalk Link Road Area 12, Site 112*. Archaeological Development Services Ltd for Department for Regional Development, Roads Service. Belfast.

Powell, C.

2005 *Final Report of Excavations at the A1/N1 Newry to Dundalk Link Road Area 13, Site 113*. Archaeological Development Services Ltd for Department for Regional Development, Roads Service. Belfast.

Ronayne, J.

2005 *Summary Report of Phase 2 Excavations, A1/N2 Newry-Dundalk link Road, Area 12 Site 111, 111A and 111B*. Archaeological Development Services Ltd for Department for Regional Development, Roads Service. Belfast.

RPS Ireland Environmental Services (RPS)

2002a *A1/N1 Newry-Dundalk Link Road Environmental Statement Environmental Impact Statement*, Volume 1 Main Text.

2002b *A1/N1 Newry-Dundalk Link Road Environmental Statement Environmental Impact Statement*, Volume 2 Appendices.

2005 *Summary Report of Excavations at the A1/N1 Newry to Dundalk Link Road Area 13, Site 114*. Archaeological Development Services Ltd for Department for Regional Development, Roads Service, Belfast.

2006 *Summary Report of Excavations Along the A1/N1 Newry-Dundalk Link Road, Area 13 Site 121*. Archaeological Development Services Ltd for Department for Regional Development, Roads Service, Belfast.

2006 *Interim Stratigraphic Report of Excavations Along the A1/N1 Newry-Dundalk Link Road Area 12, Site 123*. Archaeological Development Services Ltd for Department for Regional Development, Roads Service, Belfast

Wright, T.

1758 *Louthiana*. London

Appendix 1 Context list

Ctx	Type	Grid	Description/finds	Lxwxd (m.)	Fill of	Fill by	Interpretation
001	Dep	All	Loose, dark brown sandy silt, mod. stones	Max. 0.45m deep			Topsoil
002	Dep	All	Mod. compact orange-brown/grey/brown silty sand with gravel patches, very stoney				Natural subsoil
003	Cut	100/120	Oval, gently sloping sides, flat base	0.70x0.60x0.15		007 006	Stone socket
004	Dep	100/120	Mod. compact, grey sandy silt, occ. small stones	0.50x0.50x0.17	008		Fill of stone socket
005	Cut	90/100	Sub-triangular, gentle to steep sides, sloped base	0.50x0.40x0.25		010 011 012	Stone socket
006	Dep	100/120	Compact, dark brown silty sand, small stones. Pottery	0.45x0.45x0.12	003		Fill of stone socket
007	Dep	100/120	Compact, dark yellow, sandy clay, small stones	0.50x0.50x0.03	003		Fill of stone socket
008	Cut	100/120	Sub-oval, steep sides, uneven base	0.70x0.40x0.15		004	Stone socket
009	Cut	90/110	Sub-oval, vertical sides, concave base	0.38x0.35x0.20		013	Stone socket
010	Dep	90/100	Loose, Dark brown silty clay, occ. small-large stones	0.40x0.34x0.07	005		Fill of stone socket
011	Dep	90/100	Mod. compact orange-yellow sandy clay, mod. small stones	0.30x0.37x0.05	005		Fill of stone socket
012	Dep	90/100	Loose, orange-grey sandy clay, freq. small stones	0.45x0.32x0.24	005		Fill of stone socket
013	Dep	90/110	Loose, brown sandy silt	0.32x0.28x0.20	009		Fill of stone socket
014	Cut	100/120	Circular, sloped sides, concave base	0.30x0.30x0.12		015	
015	Dep	100/120	Mod. compact, dark-brown grey, sandy loam	0.30x0.30x0.12	014		Fill of stone socket
016	Dep	100/120	Mod. compact, dark grey/brown, silty clay, freq. small stones	1.20x0.45x0.07	021		Fill of stone socket
017	Cut	100/120	Not recorded				Non-arch.
018	Dep	90/110	Loose, brown/grey sand, occ. stones	2.13x1.2x0.14	031 122		Upper fill of corn dryer
019	Dep	100/120	Mod. compact-loose, orange-brown sandy silt, freq. small stones	1.20x0.60x0.13	021		Fill of stone socket
020	Dep	100/120	Mod. compact, dark grey/brown silty clay, freq. small stones	1.20x0.30x0.07	021		Fill of stone socket
021	Cut	100/120	Sub-circular, steep-gentle sides, concave base	1.00x0.53x0.20		016 019 020	Stone socket
022	Dep	90/110	Loose, brown/black, charcoal-rich sand, small stones	1.58x?x0.21	122		Fill of grain dryer

Ctx	Type	Grid	Description/finds	Lxwxh (m.)	Fill of	Fill by	Interpretation
023	Dep	100/120	Loose, brown, sandy silt, mod. small stones. Modern pottery	0.44x0.31x0.09	030		Fill of stone socket
024	Dep	100/120	Loose, brown, silty clay, occ. small stones. Modern pottery	0.58x0.28x0.12	029		Fill of stone socket
025	Cut	100/110	Not recorded				Non-arch.
026	Dep	100/120	Mod. compact, dark brown sandy silt, occ. small stones	0.28x0.23x0.16	027		Fill of stone socket
027	Cut	100/120	Sub-rectangular, sloped sides, narrow base	0.28x0.23x0.16		026	Stone socket
028	Dep	100/110	Not recorded				Non-arch.
029	Cut	100/120	Sub-oval, gradual-steep sides, flat base	0.56x0.28x0.12		024	Stone socket
030	Cut	100/120	Sub-triangular, steep-gradual sides, flat base	0.44x0.31x0.09		023	Stone socket
031	Cut	90/110	Oval, gradual sides, concave base	1.00x0.95x0.50		018 022	Chamber of grain dryer
032	Cut	100/110	Not recorded				Non-arch.
033	Dep.	100/110	Not recorded				Non-arch.
034	Dep	100/120	Mod. compact, black/reddish brown silt, freq. charcoal	0.50x0.40x0.06	037		Fill of tree disturbance
035	Dep	110/120	Mod. compact, brown, loam, occ. stones. Coal	0.40x0.30x0.11	038		Fill of stone socket
036	Dep	110/120	Mod. compact, brown loam, occ. stones	0.31x0.30x0.05	039		Fill of stone socket
037	Cut	100/120	Oval, sloped sides, concave base	0.50x0.40x0.06		034	Tree disturbance
038	Cut	110/120	Sub-oval, sloped sides, flat base	0.40x0.30x0.11		035	Stone socket
039	Cut	110/120	Sub-oval, sloped sides, concave base	0.31x0.30x0.05		036	Stone socket
040	Cut	100/130	Oval, vertical/gradual sides, flat base	0.54x0.42x0.15		070	Stone socket
041	Cut	100/130	Circular, steep sides, concave base	0.36x0.32x0.07		069	Stone socket
042	Cut	100/120	Sub-rectangular, vertical sides, narrow base	0.22x0.22x0.12		043 074	Stone socket
043	Dep	100/120	Mod. compact, dark brown sandy silt, small stones. Pottery, Metal	0.22x0.22x0.12	042		Fill of stone socket
044	Cut	100/120	Sub-oval, vertical sides, flat base	0.44x0.44x0.15		045	Stone socket
045	Dep	100/120	Mod. compact, dark brown/black sandy silt, occ. small stones Pottery	0.40x0.40x0.14	044		Fill of stone socket
046	Cut	100/120	Sub-rectangular, vertical sides, narrow base	0.30x0.25x0.18		097	Stone socket
047	Dep	100/120	Mod. compact, dark brown sandy silt	0.30x0.25x0.18	046		Fill of stone socket
048	Cut	100/120	Sub-oval, irregular sides, flat base	0.24x0.20x0.14		049	Stone socket
049	Dep	100/120	Loose, dark brown sandy silt, occ. small stones	0.24x0.20x0.14	048		Fill of stone socket

Ctx	Type	Grid	Description/finds	Lxwxh (m.)	Fill of	Fill by	Interpretation
050	Dep	100/120	Loose, brown silt, occ. small stones	0.27x0.25x0.05		104	Fill of stone socket
051	Dep	100/130	Friable, grey/orange brown sandy silt, freq. small stones	0.34x0.32x0.25	064		Fill of posthole
052	Dep	100/130	Mod. compact, grey/brown sandy silt, freq. stones, occ. charcoal flecks	0.48x0.42x0.24	076		Fill of stone socket
053	Dep	100/130	Mod. compact, brown/grey sandy silt, occ. small stones	0.50x0.24x0.09	094		Fill of stone socket
054	Dep	100/130	Mod. compact, grey/brown sandy silt, occ. stones	0.37x0.25x0.09	084		Fill of stone socket
055	Dep	100/130	Mod. compact, dark grey/brown sandy silt, occ. small stones	0.57x0.33x0.15	096		Fill of stone socket
056	Dep	100/130	Loose, dark grey/brown sandy silt, occ. small stones	0.37x0.34x0.14	119		Fill of stone socket
057	Dep	100/130	Mod. compact, grey/brown sandy silt, occ. small – medium stones	0.68x0.50x0.12	120		Fill of stone socket
058	Dep	100/130	Loose, brown silty sandy loam, occ. small stones	1.00x0.45x0.12	124		Fill of stone socket
059	Cut	100/120	Sub-rectangular, vertical sides, narrow base	0.13x0.10x0.08		060	Stone socket
060	Dep	100/120	Loose, dark brown sandy silt	0.18x0.13x0.10	059		Fill of stone socket
061	Dep	100/120	Loose grayish brown silty clay, occ. small stones	0.30x0.28x0.14	085		Fill of stone socket
062	Cut	80/110	Oval, sloped sides, rounded base	0.45x0.45x0.10		067	Stone socket
063	Cut	100/120	Not recorded				Non-arch.
064	Cut	100/130	Circular, steep sides, flat base	0.34x0.32x0.25		051	Posthole
065	Dep	100/120	Loose, greyish brown, clayey silt, occ. med. stones, occ. charcoal flecks	0.20x0.18x0.05	066		Fill of stone socket
066	Cut	100/120	Circular, steep sides, v-shaped base	0.20x0.18x0.05		065	Stone socket
067	Dep	80/110	Mod. compact, brown/orange sandy clay, occ. shell fragments Shell	0.45x0.45x0.10	062		Fill of stone socket
068	Cut	100/130	Triangular, gradual sides, flat base	0.26x0.14x0.06		071	Stone socket
069	Dep	100/130	Compact, greyish brown sandy silt, occ. small stones, occ. charcoal flecks	0.36x0.32x0.07	041		Fill of stone socket

Ctx	Type	Grid	Description/finds	Lxwxh (m.)	Fill of	Fill by	Interpretation
070	Dep	100/130	Compact, greyish brown sandy silt, occ. small stones	0.54x0.42x0.15	040		Fill of stone socket
071	Dep	100/130	Compact, greyish brown sandy silt, occ. small stones	0.26x0.14x0.06	068		Fill of stone socket
072	Dep	100/130	Loose, dark orange-brown, sandy silt loam, occasional med. stones	4.60x0.64x0.24	073		Plough furrow
073	Cut	100/130	Linear, gradual sides, rounded base	4.60x0.64x0.24		072	Plough furrow
074	Dep	100/120	Compact, yellow brown silty sand, occ. small stones	0.22x0.22x0.12	042		Fill of stone socket
075			Void				
076	Cut	100/130	Sub-circular, vertical/gradual sides, rounded base	0.48x0.42x0.24		052	Stone socket
077	Cut	90/120	Circular, sloped sides, rounded base	0.40x0.39x0.15		078	Stone socket
078	Dep	90/120	Loose, brown grey sandy clay, freq. small stones. Pottery	0.40x0.39x0.15	077		Fill of stone socket
079	Cut	100/130	Oval, gradual sides, flat base	0.46x0.38x0.05		080	Stone socket
080	Dep	100/130	Mod. compact, brown sandy silt, occ. small stones	0.46x0.38x0.05	079		Fill of stone socket
081	Dep	100/120	Loose, greyish brown clayey silt, occ. small stones, mod. charcoal flecks. Flint	0.36x0.22x0.07	086		Fill of stone socket
082	Cut	90/120	Not recorded				Non-arch.
083	Cut	090/120	Not recorded				Non-arch.
084	Cut	100/130	Oval, steep sides, rounded base	0.37x0.25x0.09		054	Stone socket
085	Cut	100/120	Circular, steep sides, concave base	0.30x0.28x0.14		061	Stone socket
086	Cut	100/120	Oval, steep sides, concave base	0.36x0.22x0.07		081	Stone socket
087	Dep	110/120	Mod. compact, brown loam, occ. small/med. stones. Pottery	6.00x0.90x0.42	088		Fill of plough furrow
088	Cut	110/120	Linear, sloped sides, concave base	6.00x0.90x0.42		087	Plough furrow
089	Cut	90/120	Circular, steep/gradual sides, rounded base	0.34x0.30x0.14		093	Stone socket
090	Dep	100/120	Loose, greyish brown silty clay, mod. small stones, occ. charcoal flecks		095		Fill of stone socket
091	Dep	90/120	Not recorded				Non-arch.
092	Dep	90/120	Not recorded				Non-arch.
093	Dep	90/120	Loose, brown grey sandy clay, occ. large stones	0.34x0.30x0.14	089		Fill of stone socket
094	Cut	100/130	Sub-oval, steep/gradual sides, rounded base	0.50x0.24x0.09		053	Stone socket

Ctx	Type	Grid	Description/finds	Lxwxh (m.)	Fill of	Fill by	Interpretation
095	Cut	100/120	Oval, steep sides, concave base	0.54x0.32x0.20		090	Stone socket
096	Cut	100/130	Triangular, steep sides, v-shaped base	0.35x0.28x0.15		055	Stone socket
097	Dep	100/120	Mod.compact, light brown yellowish silt	0.30x0.25x0.18	046		Fill of stone socket
098	Cut	100/120	Oval, steep sides, flat base	0.20x0.18x0.13		109	Stone socket
099	Cut	100/120	Oval, steep sides, concave base	0.28x0.24x0.17		110	Stone socket
100	Cut	100/120	Circular, gradual sides, concave base	0.10x0.10x0.04		118	Stone socket
101	Cut	100/120	Circular, gradual sides, narrow base	0.09x0.09x0.03		117	Stone socket
102	Dep	100/120	Not recorded				Non-arch.
103	Dep	100/120	Not recorded				Non-arch.
104	Cut	100/120	Circular, steep/gentle sides, concave base	0.27x0.25x0.05		50	Stone socket
105	Cut	90/120	Circular, sloped sides, rounded base	0.53x0.44x0.17		106	Stone socket
106	Dep	90/120	Loose, brown/grey sandy clay, freq. small stone. Pottery	0.53x0.44x0.17	105		Fill of stone socket
107	Cut	100/120	Sub-oval, sloped sides	0.25x0.25x0.07		108	Stone socket
108	Dep	100/120	Mod.compact, reddish brown sandy silt	0.25x0.25x0.07	107		Fill of stone socket
109	Dep	100/120	Friable, dark brown sandy silt, occ. flecks of charcoal	0.20x0.18x0.13	098		Fill of stone socket
110	Dep	100/120	Compact, dark greyish brown sandy silt, occ. small stones	0.28x0.24x0.17	099		Fill of stone socket
111	Dep	110/120	Mod. compact, brown loam, mod. stones	7.00x1.00x0.07	112		Fill of plough furrow
112	Cut	110/120	Linear, sloped sides, irregular/concave base	7.00x1.00x0.07		111	Plough furrow
113	Cut	90/120	Oval, steep/gentle sides, flat base	0.56x0.30x0.19		114	Stone socket
114	Dep	90/120	Mod.compact, brown/grey sandy clay, freq. small stones, occ. larger stones. Pottery	0.56x0.30x0.19	113		Fill of stone socket
115	Dep	100/130	Loose, dark brown sandy loam, occ. small stones	0.74x0.44x0.14	116		Fill of stone socket
116	Cut	100/130	Sub-circular, gradual sides, irregular base	0.74x0.44x0.14		115	Stone socket
117	Dep	100/120	Compact, dark greyish brown sandy silt occ. charcoal flecks	0.09x0.09x0.03	101		Fill of stone socket
118	Dep	100/120	Compact, dark greyish brown sandy silt, occ. small stones	0.10x0.10x0.04	100		Fill of stone socket
119	Cut	100/130	Sub-circular, sloped sides, flat base	0.37x0.34x0.14		056	Stone socket
120	Cut	100/30	Irregular, gentle sides, rounded base	0.68x0.50x0.12		057	Stone socket

Ctx	Type	Grid	Description/finds	Lxwxh (m.)	Fill of	Fill by	Interpretation
121	Dep	100/120	Loose, grey brown silty clay, occ. small stones	0.42x0.40x0.10	123		Fill of stone socket
122	Cut	90/110	Oval, gradual sides, concave base	0.80x0.70x0.32		18 22	Grain drying kiln
123	Cut	110/120	Irregular, gradual/sloped sides, irreg. base	0.42x0.40x0.10		121	Stone socket
124	Cut	100/130	Circular, gradual sides, irreg. base	1.00x0.45x0.12		058	Stone socket
125	Cut	100/110	Circular, steep/gentle sides, flat base	0.51x0.47x0.09		126	Stone socket
126	Dep	100/110	Mod. compact, brown sandy clay, freq. small stones	0.37x0.47x0.09	125		Fill of stone socket
127	Dep	110/120	Mod. compact, brown grey clayey silt, occ. small stones, occ. charcoal flecks	0.47x0.38x0.23	131		Fill of stone socket
128	Cut	100/120	Circular, gradual sides, narrow base	0.13x0.13x0.04		134	Stone socket
129	Cut	100/120	Irregular, gradual sides, concave base	0.18x0.14x0.04		135	Stone socket
130	Cut	100/120	Triangular, gradual/steep sides, narrow base	0.28x0.20x0.08		136	Stone socket
131	Cut	110/120	Oval, steep sides, concave base	0.47x0.38x0.23		127	Stone socket
132	Dep	110/120	Mod. compact, brown loam, occ. small stones	7.00x0.61x0.16	133		Fill of plough furrow
133	Cut	110/120	Linear, sloped sides, concave base	7.00x0.61x0.16		132	Plough furrow
134	Dep	100/120	Compact, dark grey/brown sandy silt occ. small stones	0.13x0.13x0.04	128		Fill of stone socket
135	Dep	100/120	Compact, dark greyish brown sandy silt occ. small stones	0.18x0.14x0.10	129		Fill of stone socket
136	Dep	100/120	Compact, dark brown/grey sandy silt Mod.charcoal flecks	0.28x0.20x0.08	130		Fill of stone socket
137	Cut	90/120	Sub-rectangular, gentle sides, concave base	0.47x0.44x0.19		138	Stone socket
138	Dep	90/120	Mod. compact, brown grey sandy silty clay mod. small stones	0.47x0.44x0.19	137		Fill of stone socket
139	Dep	70/110	Mod. compact, dark brown sandy silt, occ. small stones	0.93x0.56x0.18	147		Fill of plough furrow
140	Dep	70/110	Mod. compact, dark brown silt, Occ. small stones. Pottery	0.42x0.22x0.13	144		Fill of stone socket
141	Dep	70/110	Not recorded				Non-arch.
142	Dep	100/130	Loose, dark brown silt loam	0.55x0.25x0.10	143		Fill of stone socket
143	Cut	100/130	Circular, gradual sides, irreg. base	0.55x0.25x0.10		142	Stone socket
144	Cut	70/110	Sub-rectangular, gradual sides, irreg. base	0.42x0.22x0.13		140	Stone socket

Ctx	Type	Grid	Description/finds	Lxwxh (m.)	Fill of	Fill by	Interpretation
145	Cut	100/120	Sub-oval, gradual sides, flat base	0.36x0.20x0.08		146	Tree hole
146	Dep	100/120	Loose, dark brown sandy silt, occ. small stones	0.36x0.20x0.08	145		Fill of tree hole
147	Cut	70/110	Oval, steep sides, concave base	0.93x0.56x0.18		139	Plough furrow
148	Dep	100/130	Mid grey loam	0.28x0.16x0.07	149		Fill of stone socket
149	Cut	100/130	Sub-oval, gentle sides, rounded bottom	0.28x0.16x0.07		148	Stone socket
150	Dep	100/130	Mod. compact, grey brown silty clay, occ. small stones	0.35x0.30x0.10	151		Fill of stone socket
151	Cut	100/130	Circular, sloped sides, rounded base	0.35x0.30x0.10		150	Stone socket
152	Cut	90/120	Circular, steep/gradual sides, flat base	0.42x0.40x0.22		153	Stone socket
153	Dep	90/120	Loose, brown grey sandy silty clay, mod. small stones	0.42x0.40x0.22	152		Fill of stone socket
154	Dep	100/130	Loose, brown grey/black silty clay, Freq. charcoal flecks	0.07x0.07x0.07	156		Fill of stakehole
155	Dep	70/110	Mod. compact, dark brown sandy silt, mod. small stones. Metal, Building Material	0.80x0.40x0.16	157		Fill of stone socket
156	Cut	100/130	Circular, steep/gradual sides, rounded concave base	0.07x0.07x0.07		154	Stakehole
157	Cut	70/110	Oval, gradual sides, irreg. base	0.73x0.70x0.18	155		Stone socket
158	Dep	70/110	Mod. compact, dark brown silt, occ stones	0.40x0.16x0.08	159		Fill of stone socket
159	Cut	70/110	Sub-rectangular, gradual sides, irreg. base	0.42x0.22x0.08		158	Stone socket
160	Dep	70/110	Mod. compact, dark brown loam, occ. small stones, occ. charcoal flecks	0.38x0.29x0.19	161		Fill of stone socket
161	Cut	70/110	Sub-oval, sloped sides, concave base	0.38x0.29x0.19		160	Stone socket
162	Dep	100/130	Mixed gritty sand/clay/topsoil. Modern pottery, flint	Not recorded			Engineers test pit
163	Cut	110/120	Sub-oval, gentle sides, flat base	0.49x0.37x0.18		164	Stone socket
164	Dep	110/120	Mod. compact, dark brown sandy silt, occ. small stones and charcoal. Pottery, Bone	0.49x0.37x0.18	163		Fill of stone socket
165	Cut	110/120	Oval, vertical sides, flat base	0.81x0.70x0.39		166	Stone socket
166	Dep	110/120	Mod. compact, dark brown sandy silt, freq. stones and freq. charcoal. Pottery, Glass	0.81x0.70x0.39	165		Fill of stone socket

Ctx	Type	Grid	Description/finds	Lxwxh (m.)	Fill of	Fill by	Interpretation
167	Dep	110/130	Mod. compact, dark brown silt, mod. large and small stones	0.55x0.29x0.26	168		Fill of poss. posthole
168	Cut	110/130	Sub-rectangular, steep sides, irreg. base	0.57x0.42x0.32		167	Poss. posthole
169	Dep	110/130	Mod. compact, dark brown silt, mod. stones	0.40x0.27x0.13	170		Fill of stone socket
170	Cut	110/130	Sub-rectangular, gradual sides, irreg. base	0.42x0.40x0.18		169	Stone socket
171	Dep	110/130	Mod. compact, dark brown silt, mod stones	0.74x0.18x0.10	214		Fill of stone socket
172	Cut	100/120	Sub-oval, steep/gradual sides, flat/concave base	0.45x0.38x0.20		186	Stone socket
173	Cut	100/120	Oval, gradual sides, narrow base	0.25x0.16x0.11		187	Stone socket
174			Not recorded				Non-arch.
175	Cut	100/120	Oval, gradual sides, concave base	0.28x0.16x0.07		188	Stone socket
176	Cut	100/120	Oval, steep sides, flat base	0.53x0.33x0.08		221	Stone socket
177	Dep	100/120	Not recorded				Non-arch.
178	Cut	100/120	Not recorded				Non-arch
179	Dep	110/130	Mod. compact, brown silt, occ. stones	1.00x0.29x0.20	180		Fill of stone socket
180	Cut	110/130	Sub-rectangular, steep sides, irreg. base	1.27x0.45x0.30		179 220	Stone socket
181	Dep	100/120	Loose, dark brown sandy silt, occ. small stones	0.52x0.14x0.11	189		Fill of stone socket
182	Dep	100/120	Loose, dark brown sandy silt, occ. small stones	0.46x0.33x0.18	190		Fill of stone socket
183	Dep	100/120	Loose, dark brown sandy silt, occ. small stones	0.23x0.18x0.07	191		Fill of stone socket
184	Dep	100/120	Loose, dark brown sandy silt, occ. stones	0.13x0.13x0.08	192		Non-arch.
185	Dep	100/120	Loose, dark brown sandy silt, occ. small stones	0.20x0.13x0.03	193		Non-arch
186	Dep	100/120	Compact, brownish grey sandy silt, occ. small stones and charcoal flecks. Pottery	0.45x0.38x0.20	172		Fill of stone socket
187	Dep	100/120	Compact, brownish grey sandy silt, occ. small stones. Pottery	0.25x0.16x0.11	173		Fill of stone socket
188	Dep	100/120	Compact, brownish grey silty sandy, freq. small stones	0.28x0.16x0.08	175		Fill of stone socket
189	Cut	100/120	Sub-rectangular, gradual sides, flat base	0.52x0.34x0.16		181	Stone socket
190	Cut	100/120	Sub-circular, gradual sides, narrow base	0.46x0.33x0.14		182	Stone socket
191	Cut	100/120	Oval, gentle sides, flat base	0.23x0.18x0.07		183	Stone socket
192	Cut		Not recorded				Non-arch.
193	Cut		Not recorded				Non-arch.
194	Dep	110/140	Friable, dark brown loam, occ. small stones	0.43x0.39x0.08	196		Fill of posthole

Ctx	Type	Grid	Description/finds	Lxwxh (m.)	Fill of	Fill by	Interpretation
195	Cut	110/140	Circular, steep/sloped sides, concave base	0.59x0.56x0.25		197	Posthole
196	Cut	110/140	Circular, vertical sides, concave base	0.43x0.39x0.37		194 213	Posthole
197	Dep	110/140	Loose, dark brown/black silty clay, freq small stones, freq. charcoal flecks	0.58x0.56x0.25	195		Fill of posthole
198	Dep	110/140	Loose, black silty clay, freq. charcoal	0.40x0.35x0.12	219		Fill of poss. dryer
199	Dep	110/140	Compact, orange clay	0.50x0.50x0.21	219		Fill of poss. dryer
200	Dep	120/140	Loose, purplish brown clayey silt, mod. small stones, occ. charcoal flecks. Modern Pottery	0.57x0.37x0.13	215		Fill of stone socket
201	Dep	70/130	Loose, brown grey sandy silt. Bone	0.33x0.21x0.11	208		Fill of stone socket
202	Dep	70/130	Loose, brown grey sandy silt	0.13x0.12x0.07	209		Fill of stone socket
203	Dep	70/130	Loose, grey brown sandy silt	0.28x0.26x0.16	210		Fill of stone socket
204	Dep	70/130	Loose, dark grey sandy silt	0.62x0.47x0.04	211		Fill of burrow
205	Dep	70/130	Loose, black grey silty sand	0.78x0.62x0.22	211		Fill of burrow
206	Dep	80/130	Loose, dark grey sandy silt	1.23x0.81x0.17	207		Fill of stone socket
207	Cut	80/130	Oval, gradual sides, flat base	1.23x0.81x0.17		206	Stone socket
208	Cut	70/130	Oval, sloped sides, flat base	0.33x0.21x0.11		201	Stone socket
209	Cut	70/130	Oval, gradual sides, concave base	0.13x0.12x0.07		202	Stone socket
210	Cut	70/130	Oval, gradual sides, flat base	0.28x0.26x0.16		203	Stone socket
211	Cut	70/130	Oval, gradual sides, flat base	0.78x0.62x0.34		204 205	Animal burrow
212	Dep.	40/130	Not recorded				Non-arch.
213	Dep	110/140	Friable, grey brown silt, freq. stones	0.43x0.37x0.32	196		Fill of posthole
214	Cut	110/130	Sub-oval, steep sides, concave base	0.74x0.23x0.18		171	Stone socket
215	Cut	120/140	Oval, gentle sides, narrow base	0.57x0.37x0.13		200	Stone socket
216	Dep	110/140	Loose, brownish orange silty clay, occ. charcoal flecks	2.00x1.50x0.24	219		Fill of poss. dryer
217	Dep	110/140	Loose, brown silty clay, occ. charcoal flecks	1.50x1.00x0.06	219		Fill of poss. dryer
218			Void				
219	Cut	110/140	Kidney-shaped, gentle-steep sides, irregular, rounded base	1.50x1.00x0.35			Cut of poss. dryer
220	Dep	110/130	Mod. compact, dark brown silt, occ. stones occ. charcoal flecks	1.00x0.29x0.20	180		Fill of stone socket

Ctx	Type	Grid	Description/finds	Lxwxh (m.)	Fill of	Fill by	Interpretation
221	Dep	100/120	Compact, dark brown sandy silt, occ. small stones, occ. charcoal flecks	0.53x0.33x0.08	176		Fill of stone socket
222	Dep	110/140	Friable, greyish brown loam, occ. small stones	0.49x0.46x0.29	225		Fill of posthole
223	Cut	110/120	Irreg. gentle sides, rounded base	0.90x0.50x0.22		224	Stone socket
224	Dep	110/120	Mod.compact, grey brown silty clay, occ. small stones, occ. charcoal flecks	0.90x0.50x0.22	223		Fill of stone socket
225	Cut	110/140	Circular, gradual sides, concave base	0.48x0.48x0.29		222	Posthole
226			Not recorded				Non-arch.
227	Dep	120/130	Mod. compact, dark brown sandy silt, occ. small stones	0.30x0.29x0.26	232		Fill of stone socket
228	Dep	110/140	Loose, grey brown silty clay, occ. charcoal flecks	x0.75x0.08			Fill of plough furrow
229	Dep	110/140	Loose, brown silty clay, occ. large stones, occ. charcoal flecks	1.00x1.00x0.18	219		Fill of poss. dryer
230	Dep	120/140	Friable, brown loam, occ. stones	0.60x0.32x0.05	231		Fill of stone socket
231	Cut	120/140	Sub-circular, sloped sides, concave base	0.60x0.44x0.14		230 235	Stone socket
232	Cut	120/130	Circular, steep sides, rounded base	0.29x0.26x0.30		227	Stone socket
233	Dep	110/120	Mod. loose, grey brown silty clay, occ. small/medium stones	0.78x0.69x0.35	234		Fill of stone socket
234	Cut	110/120	Sub-oval, sloped sided, irreg. base	1.04x0.78x0.24		233 236	Stone socket
235	Dep	120/140	Mod. compact, brown/orange sandy silt, occ. small stones	0.60x0.44x0.14	231		Fill of stone socket
236	Dep.	110/120	Mod. compact, light grey/brown silty clay, occ. degraded stone	0.78x0.55x0.05	234		Fill of stone socket
237	Dep	110/140	Not recorded				Non-arch.
238	Dep	80/140	Loose, brown sandy silt, occ. stone	0.40x0.40x0.15	239		Fill of stone socket
239	Cut	80/140	Oval, sloped sides	0.40x0.40x0.15		238	Stone socket
240	Dep	80/130	Loose, dark brown sandy silt	1.80x0.70x0.16	241		Fill of stone socket
241	Cut	80/130	Oval, gradual sides, flat base	1.80x0.70x0.16		240	Stone socket
242	Dep	110/130	Mod. compact, grey brown silty clay, freq. small stones	0.97x0.53x0.20	243		Fill of stone socket
243	Cut	110/130	Sub-oval, steep/shallow sides, rounded base	0.97x0.53x0.20		242	Stone socket
244	Dep	100/140	Mod. compact, orange/brown silt, mod. stones	2.00x1.00x0.70	247		Fill of field boundary ditch

Ctx	Type	Grid	Description/finds	Lxwxd (m.)	Fill of	Fill by	Interpretation
245	Dep	100/140	Mod. compact, dark brown stony silt,	2.00x1.00x0.70	247		Fill of field boundary ditch
246	Dep	100/140	Mod. compact, light grey/orange silty sand	60.0x0.94x0.14	247		Fill of field boundary ditch
247	Cut	100/140	Linear, sloped sides, rounded base	60.0x2.00x0.80		244 245 246	Field boundary ditch

Appendix II Finds list

Context	Cut	Description	Find no.
001		Topsoil finds	1
022	031	Pottery (burnt)	2
026	027	Metal (poss. glass slag)	3
026	027	Fossil?	4
043	042	Pottery fragments	5
067	062	Shell	6
026	027	Pottery	7
043	042	Metal (poss. glass slag)	8
069	041	Metal (nail)	9
035	038	Coal?	10
078	077	Pottery	11
052	076	Pottery	12
052	076	Burnt Bone	13
045	044	Pottery	14
081	086	Flint	15
087	088	Pottery (glazed)	16
106	105	Pottery	17
114	113	Pottery	18
140	144	Pottery (blackware)	19
		Void	20
155	157	Metal	21
155	157	Brick	22
164	163	Pottery	23
164	163	Glass	24
166	165	Brick	25
187	173	Pottery	26
186	172	Brick?	27
166	165	Glass	28
224	223	Pottery (modern)	29

Appendix III Sample List

No.	Context	Cut	Bags	Reason
1	004	008	1	Soil sample
2	006	003	2	Soil sample
3	007	003	1	Soil sample
4	013	009	1	Soil sample
5	010	005	1	Soil sample
6	011	005	1	Soil sample
7	012	005	1	Soil sample
8	015	014	1	Soil sample
9	020	021	1	Soil sample
10	019	021	1	Soil sample
11	016	021	1	Soil sample
12	023	030	1	Soil sample
13	024	029	1	Soil sample
14	026	027	2	Soil sample
15	018	031	1	Soil sample
16	022	031	1	Soil sample
17	051	064	1	Soil sample
18	043	042	1	Soil sample
19	071	068	1	Soil sample
20	069	041	1	Soil sample
21	070	040	1	Soil sample
22	067	062	1	Soil sample
23	022	031	1	Charcoal sample
24	061	085	1	Soil sample
25	043	042	1	Charcoal sample
26	074	042	1	Soil sample
27	052	076	1	Soil sample
28	065	066	1	Soil sample
29	080	079	1	Soil sample
30	045	044	1	Soil sample
31	045	044	1	Charcoal sample
32	034	037	1	Charcoal sample
33	061	085	1	Soil sample
34	078	077	1	Soil sample
35	081	086	1	Soil sample
36	054	084	1	Soil sample
37	090	095	2	Soil sample
38	047	046	1	Soil sample
39	093	039	1	Soil sample
40	053	094	1	Soil sample
41	055	096	1	Soil sample
42	097	046	1	Soil sample
43	106	105	1	Soil sample
44	109	098	1	Soil sample
45	110	099	1	Soil sample
46	050	104	1	Soil sample
47	117	101	1	Soil sample
48	118	100	1	Soil sample
49	049	048	1	Soil sample

No.	Context	Cut	Bags	Reason
50	114	113	1	Soil sample
51	121	123	1	Soil sample
52	056	119	1	Soil sample
53	057	120	1	Soil sample
54	126	125	1	Soil sample
55	108	107	1	Soil sample
56	127	131	2	Soil sample
57	134	128	1	Soil sample
58	135	129	1	Soil sample
59	136	130	1	Soil sample
60	060	059	1	Soil sample
61	138	137	1	Soil sample
62	140	144	1	Soil sample
63	146	145	1	Charcoal sample
64	154	156	1	Soil sample
65	153	152	1	Soil sample
66	148	144	1	Soil sample
67	150	151	1	Soil sample
68	164	163	1	Soil sample
69	167	168	1	Soil sample
70	169	170	1	Soil sample
71	164	163	1	Soil sample
72	186	172	1	Soil sample
73	187	173	1	Soil sample
74	188	175	1	Soil sample
75	177	178	1	Soil sample
76	179	180	1	Soil sample
77	166	165	1	Soil sample
78	166	165	1	Charcoal sample
79	214	171	1	Soil sample
80	200	215	1	Charcoal sample
81	213	196	2	Soil sample
82	197	195	1	Soil sample
83				Void
84	220	180	1	Soil sample
85	221	176	1	Soil sample
86	226	017	1	Soil sample
87	224	223	1	Soil sample
88				Void
89	201	208	1	Soil sample
90	202	209	1	Soil sample
91	203	210	1	Soil sample
92	204	211	1	Soil sample
93	205	211	1	Soil sample
94	206	207	1	Soil sample
95	179	180	1	Charcoal sample
96	233	234	1	Soil sample
97	236	234	1	Soil sample
98	238	239	1	Soil sample
99	240	241	1	Soil sample

No.	Context	Cut	Bags	Reason
100	242	243	1	Soil sample
101	201	208	1	Animal bone
102	229	219	1	Soil sample
103	217	219	1	Soil sample
104	199	219	1	Soil sample
105	216	219	1	Soil sample
106	198	219	1	Charcoal sample

Appendix IV Photographic log

COLOUR SLIDE 1		
No.	Description	Plan (-Section) no.
1	Void	
2	Film ID	
3	Pre-ex, grid 90/100	2
4	Pre-ex, grid 90/100	2
5	Pre-ex, grid 90/110 (south)	2
6	Pre-ex, grid 90/110 (south)	2
7	Pre-ex, grid 90/110 (north)	2
8	Pre-ex, grid 90/110 (north)	2
9	Pre-ex, grid 80/110	2
10	Pre-ex, grid 80/110	2
11	Pre-ex, grid 100/110 (south)	2
12	Pre-ex, grid 100/110 (south)	2
13	Pre-ex, grid 100/110 (north)	2
14	Pre-ex, grid 100/110 (north)	2
15	Pre-ex, grid 100/120	2
16	Pre-ex, grid 100/120 (south)	2
17	Pre-ex, grid 100/120	2
18	Pre-ex, grid 100/120	2
19	Pre-ex, grid 100/120	2
20	Pre-ex, grid 100/120	2
21	Pre-ex, grid 100/120	2
22	Pre-ex, grid 100/120	2
23	Pre-ex, grid 90/120 (south)	2
24	Pre-ex, grid 90/120 (south)	2
25	Work shot	
26	Pre-ex, grid 90/120 (north)	2
27	Pre-ex, grid 90/120 (north)	2
28	Pre-ex, grid 100/130 (south)	2
29	Pre-ex, grid 100/130 (south)	2
30	Pre-ex, grid 100/130 (north)	2
31	Pre-ex, grid 100/130 (north)	2
32	Pre-ex, grid 110/130 (south)	2
33	Pre-ex, grid 110/130 (south)	2
34	Pre-ex F004	2
35	Pre-ex F004	2
36	Pre-ex F005	2
37	Pre-ex F005	2

COLOUR SLIDE 2		
No.	Description	Plan (-Section) no.
1	Film ID	
2	Mid-ex, 003, 006, 007	3-1
3	Mid-ex, 003, 006, 007	3-1
4	Mid-ex, 004, 008	3-2
5	Mid-ex, 004, 008	3-2
6	Post-ex, 003	8
7	Post-ex, 003	8
8	Mid-ex 009	4-6
9	Mid-ex 009	4-6
10	Mid-ex 005	5-3
11	Mid-ex 005	5-3
12	Post-ex, 008	8
13	Pre-ex, 016	2
14	Pre-ex, 016	2
15	Pre-ex, 015	2
16	Pre-ex, 015	2
17	Mid-ex, 016	3-5
18	Mid-ex, 016	3-5
19	Mid-ex, 014, 015, 017	3-4
20	Mid-ex, 014, 015, 017	3-4
21	Pre-ex, 018	2
22	Pre-ex, 018	2
23	Pre-ex, 023	2
24	Pre-ex, 023	2
25	Pre-ex, 024	2
26	Pre-ex, 024	2
27	Pre-ex, 026	2
28	Pre-ex, 026	2
29	Pre-ex, 025	2
30	Pre-ex, 025	2
31	Mid-ex, 026, 027	5-10
32	Mid-ex, 026, 027	5-10
33	Mid-ex, 018, 022	4-7
34	Mid-ex, 018, 022	4-7
35	Mid-ex, 023	5-8
36	Mid-ex, 024, 029	3-9
37	Pre-ex, 034, 035, 096	2

COLOUR SLIDE 3		
No.	Description	Plan (-Section) no.
1	Film ID	
2	Mid-ex, 040, 070	7-17
3	Mid-ex, 079, 080	7-25
4	Mid-ex, 079, 080	7-25
5	Pre-ex, 081	2
6	Pre-ex, 081	2
7	Mid-ex, 077	6-27
8	Mid-ex, 077	6-27
9	Mid-ex, 044, 045	5-26
10	Mid-ex, 044, 045	5-26
11	Mid-ex, 061	5-22
12	Mid-ex, 061	5-22
13	Mid-ex, 054, 084	3-28
14	Mid-ex, 054, 084	3-28
15	Pre-ex, 082, 083, 089	2
16	Pre-ex, 082, 083, 089	2
17	Pre-ex, 090	2
18	Pre-ex, 090	2
19	Mid-ex, 081, 086	5-29
20	Mid-ex, 081, 086	5-29
21	Mid-ex, 053, 094	3-35
22	Mid-ex, 053, 094	3-35
23	Mid-ex, 055, 096	3-36
24	Mid-ex, 055, 096	3-36
25	Mid-ex, 090, 095	5-32
26	Mid-ex, 090, 095	5-32
27	Mid-ex, 046, 047, 097	6-33
28	Mid-ex, 046, 047, 097	6-33
29	Pre-ex, grid 70/110 (south)	2
30	Pre-ex, grid 70/110 (south)	2
31	Pre-ex, grid 70/110 (north)	2
32	Pre-ex, grid 70/110 (north)	2
33	Pre-ex, grid 70/120 (south)	2
34	Pre-ex, grid 70/120 (south)	2
35	Pre-ex, grid 70/120 (north)	2
36	Pre-ex, grid 70/120 (north)	2
37	Pre-ex, grid 60/120	2

COLOUR SLIDE 4		
No.	Description	Plan (-Section) no.
1	Film ID	
2	Pre-ex, grid 60/120	2
3	Pre-ex, 098-103	2
4	Pre-ex, 098-103	2
5	Mid-ex, 050, 104	5-38
6	Mid-ex, 050, 104	5-38
7	Pre-ex, 049, 108	2
8	Pre-ex, 049, 108	2
9	Mid-ex, 099, 110	7-40
10	Mid-ex, 099, 110	7-40
11	Mid-ex, 098, 109	7-39
12	Mid-ex, 098, 109	7-39
13	Mid-ex, 048, 049	7-46
14	Mid-ex, 048, 049	7-46
15	Pre-ex, 115, 116	2
16	Pre-ex, 115, 116	2
17	Mid-ex, 115, 116	4-43
18	Mid-ex, 115, 116	4-43
19	Mid-ex, 100, 101	7-44, 7-45
20	Mid-ex, 100, 101	7-44, 7-45
21	Mid-ex, 056, 119	3-48
22	Mid-ex, 056, 119	3-48
23	Pre-ex, 121	2
24	Pre-ex, 121	2
25	Mid-ex, 057, 120	3-49
26	Mid-ex, 057, 120	3-49
27	Post-ex, 031, 122	8
28	Post-ex, 031, 122	8
29	Post-ex, 031, 122	8
30	Mid-ex, 113, 114	4-42
31	Mid-ex, 113, 114	4-42
32	Pre-ex, 058	2
33	Pre-ex, 058	2
34	Pre-ex, 127	2
35	Pre-ex, 127	2
36	Mid-ex, 107, 108	7-52
37	Mid-ex, 107, 108	7-52

COLOUR SLIDE 5		
No.	Description	Plan (-Section) no.
1	Mid-ex, 125, 126	4-50
2	Mid-ex, 125, 126	4-50
3	Film ID	
4	Mid-ex, 128, 134	10-54
5	Mid-ex, 128, 134	10-54
6	Mid-ex, 127, 131	4-53
7	Mid-ex, 127, 131	4-53
8	Pre-ex, 128-130	2
9	Pre-ex, 128-130	2
10	Mid-ex, 129, 135	10-55
11	Mid-ex, 129, 135	10-55
12	Working shot	
13	Working shot	
14	Mid-ex, 059, 060	10-59
15	Mid-ex, 059, 060	10-59
16	Pre-ex, 137, 138	2
17	Pre-ex, 137, 138	2
18	Pre-ex, 139, 140	2
19	Mid-ex, 137, 138	11-58
20	Pre-ex, 141	2
21	Pre-ex, 141	2
22	Pre-ex, 142	2
23	Pre-ex, 142	2
24	Mid-ex, 137, 138	11-58
25	Mid-ex, 137, 138	11-58
26	Mid-ex, 142, 143	2-61
27	Mid-ex, 142, 143	2-61
28	Mid-ex, 139	11-60
29	Mid-ex, 139	11-60
30	Pre-ex, 146	2
31	Pre-ex, 146	2
32	Mid-ex, 140, 144	11-60
33	Mid-ex, 140, 144	11-60
34	Pre-ex, 148, 150	2
35	Pre-ex, 148, 150	2
36	Mid-ex, 145, 146	10-62
37	Mid-ex, 145, 146	10-62

COLOUR SLIDE 6		
No.	Description	Plan (-Section) no.
1	Film ID	
2	Film ID	
3	General view	
4	Pre-ex, 152, 153	2
5	Pre-ex, 152, 153	2
6	Pre-ex, 154	2
7	Pre-ex, 154	2
8	Mid-ex, 148, 149	11-64
9	Mid-ex, 148, 149	11-64
10	Mid-ex, 150, 151	11-65
11	Mid-ex, 150, 151	11-65
12	Mid-ex, 152, 153	11-63
13	Mid-ex, 152, 153	11-63
14	Pre-ex, 155	2
15	Pre-ex, 155	2
16	Pre-ex, grid 110/140 (south)	2
17	Pre-ex, grid 110/140 (south)	2
18	Pre-ex, grid 110/140 (north)	2
19	Pre-ex, grid 110/140 (north)	2
20	Pre-ex, grid 100/140 (south)	2
21	Pre-ex, grid 100/140 (south)	2
22	Pre-ex, grid 100/140 (north)	2
23	Pre-ex, grid 100/140 (north)	2
24	Mid-ex, 158, 159	11-67
25	Mid-ex, 158, 159	11-67
26	Pre-ex, 160	2
27	Pre-ex, 160	2
28	Mid-ex, 160, 161	11-68
29	Mid-ex, 160, 161	11-68
30	Pre-ex, grid 110/120, 110/130	2
31	Pre-ex, grid 110/120, 110/130	2
32	Pre-ex, grid 110/120, 110/130	2
33	Pre-ex, grid 110/120, 110/130	2
34	Pre-ex, 164	2
35	Pre-ex, 164	2
36	Mid-ex, 163, 164	10-71
37	Mid-ex, 163, 164	10-71

COLOUR SLIDE 7		
No.	Description	Plan (-Section) no.
1	Pre-ex, 167, 169, 171	2
2	Pre-ex, 167, 169, 171	2
3	Film ID	
4	Pre-ex, 172-175	2
5	Pre-ex, 172-175	2
6	Pre-ex, 181-185	2
7	Pre-ex, 181-185	2
8	Pre-ex, 177-179	2
9	Pre-ex, 177-179	2
10	Pre-ex, 166	2
11	Pre-ex, 166	2
12	Mid-ex, 172, 186	11-72
13	Mid-ex, 172, 186	11-72
14	Mid-ex, 173, 187	11-73
15	Mid-ex, 173, 187	11-73
16	Mid-ex, 175, 188	11-74
17	Mid-ex, 175, 188	11-74
18	Mid-ex, 181, 189	12-75
19	Mid-ex, 181, 189	12-75
20	Mid-ex, 165, 166	12-81
21	Mid-ex, 165, 166	12-81
22	Mid-ex, 167-170	10-69
23	Mid-ex, 167-170	10-69
24	Pre-ex, 194	2
25	Pre-ex, 195	2
26	Mid-ex, 177, 178	
27	Mid-ex, 177, 178	
28	Pre-ex, 200, 212	2
29	Pre-ex, 198, 199	2
30	Mid-ex, 206, 207	15-95
31	Mid-ex, 201, 208	15-95
32	Mid-ex, 203, 210	15-93
33	Mid-ex, 202, 209	15-91
34	Mid-ex, 194, 196, 213	14-84
35	Mid-ex, 194, 196, 213	14-84
36	Mid-ex, 195, 197	14-82
37	Mid-ex, 195, 197	14-82

COLOUR SLIDE 8		
No.	Description	Plan (-Section) no.
1	Film ID	
2	Film ID	
3	Pre-ex 179	2
4	Mid-ex, 165, 166	12-81
5	Mid-ex, 182, 190	12-76
6	Mid-ex, 182, 190	12-76
7	Mid-ex, 183, 191	12-77
8	Mid-ex, 183, 191	12-77
9	Pre-ex 176	2
10	Pre-ex 176	2
11	Mid-ex, 171, 214	4-83
12	Mid-ex, 171, 214	4-83
13	Mid-ex, 176, 221	14-87
14	Mid-ex, 176, 221	14-87
15	Mid-ex, 200, 215	12-85
16	Mid-ex, 200, 215	12-85
17	Pre-ex 233	2
18	Pre-ex 233	2
19	Pre-ex 224	2
20	Pre-ex 224	2
21	Mid-ex, 222, 225	16-96
22	Mid-ex, 222, 225	16-96
23	Pre-ex 017	2
24	Pre-ex 017	2
25	Mid-ex, 223, 224	12-90
26	Mid-ex, 223, 224	12-90
27	Mid-ex, 017, 226	3-4
28	Site 118, Colour Slide 1	
29	Site 118, Colour Slide 1	
30	Site 118, Colour Slide 1	
31	Site 118, Colour Slide 1	
32	Site 118, Colour Slide 1	
33	Site 118, Colour Slide 1	
34	Site 118, Colour Slide 1	
35	Site 118, Colour Slide 1	
36	Site 118, Colour Slide 1	
37	Site 118, Colour Slide 1	

COLOUR SLIDE 9		
No.	Description	Plan (-Section) no.
1	Site 118, Colour Slide 2	
2	Site 118, Colour Slide 2	
3	Site 118, Colour Slide 2	
4	Site 118, Colour Slide 2	
5	Site 118, Colour Slide 2	
6	Site 118, Colour Slide 2	
7	Site 118, Colour Slide 2	
8	Site 118, Colour Slide 2	
9	Site 118, Colour Slide 2	
10	Site 118, Colour Slide 2	
11	Site 118, Colour Slide 2	
12	Site 118, Colour Slide 2	
13	Site 118, Colour Slide 2	
14	Site 118, Colour Slide 2	
15	Site 118, Colour Slide 2	
16	Site 118, Colour Slide 2	
17	Pre-ex, 227	2
18	Pre-ex, 227	2
19	Mid-ex, 178, 179, 180	13-86
20	Mid-ex, 227	7-97
21	Pre-ex, 230	2
22	Pre-ex, 233	2
23	Mid-ex, 230, 231, 235	13-98
24	Mid-ex, 216, 219, 228, 229	17, 13-104
25	Mid-ex, 216, 219, 228, 229	17, 13-104
26	Mid-ex, 233, 234	12-99
27	Pre-ex, 242	2
28	Post-ex, 013, 105	8
29	Post-ex, 013, 105	8
30	Mid-ex, 242, 243	12-101
31	Mid-ex, 240, 241	15-103
32	Mid-ex, 238, 239	15-102
33	Post-ex, 172, 173	8
34	Post-ex, 172, 173	8
35	Post-ex, 008, 121	8
36	Post-ex, 008, 121	8
37	Mid-ex, 198, 199, 216-219, 228, 229	17, 13-104

COLOUR SLIDE 10		
No.	Description	Plan (-Section) no.
1	Film ID	
2	Mid-ex, 244-247	16-100
3	Mid-ex, 244-247	16-100
4	247	16-100
5	Post-ex, 003, 014	8
6	Post-ex, 003, 014	8
7	Post-ex, 003, 008, 014, 021	8
8	Post-ex, 027, 042, 044, 046, 048, 059, 107, 191	8
9	Post-ex, 027, 042, 044, 046, 048, 059, 107, 191	8
10	Post-ex, 045, 176	8
11	Post-ex, 045, 176	8
12	Post-ex, 189-191	8
13	Post-ex, 189-191	8
14	Post-ex, 064, 076, 094	8
15	Post-ex, 064, 076, 094	8
16	Post-ex, grids 110/120, 110/130	8
17	Post-ex, grids 110/120, 110/130	8
18	Post-ex, grids 110/120, 110/130	8
19	Post-ex, 196, 225	8
20	Post-ex, 196, 225	8
21	Post-ex, 195, 196, 225	8
22	Post-ex, grid 100/120 (north)	8
23	Post-ex, grid 100/120 (north)	8
24	Post-ex, grid 100/120 (south)	8
25	Post-ex, grid 90/120	8
26	Post-ex, grid 90/120	8
27	Post-ex, 219	8
28	Post-ex, 219	8
29	Post-ex, 219	8
30	Post-ex, 219	8
31	Post-ex, 219	8
32	Post-ex, 219	8
33	Post-ex, 219	8
34	Post-ex, 219	8
35	Post-ex, 219	8
36	Post-ex, 219	8
37	Post-ex, 219	8

COLOUR PRINT 1		
No.	Description	Plan (-Section) no.
1	Film ID	
2	Pre-ex, grid 90/100	2
3	Pre-ex, grid 90/100	2
4	Pre-ex, grid 90/110 (south)	2
5	Pre-ex, grid 90/110 (south)	2
6	Pre-ex, grid 90/110 (north)	2
7	Pre-ex, grid 90/110 (north)	2
8	Pre-ex, grid 80/110	2
9	Pre-ex, grid 80/110	2
10	Pre-ex, grid 100/110 (south)	2
11	Pre-ex, grid 100/110 (south)	2
12	Pre-ex, grid 100/110 (north)	2
13	Pre-ex, grid 100/110 (north)	2
14	Pre-ex, grid 100/120	2
15	Pre-ex, grid 100/120 (south)	2
16	Pre-ex, grid 100/120	2
17	Pre-ex, grid 100/120	2
18	Pre-ex, grid 100/120	2
19	Pre-ex, grid 100/120	2
20	Pre-ex, grid 100/120	2
21	Pre-ex, grid 100/120	2
22	Pre-ex, grid 90/120 (south)	2
23	Pre-ex, grid 90/120 (south)	2
24	Work shot	
25	Pre-ex, grid 90/120 (north)	2
26	Pre-ex, grid 90/120 (north)	2
27	Pre-ex, grid 100/130 (south)	2
28	Pre-ex, grid 100/130 (south)	2
29	Pre-ex, grid 100/130 (north)	2
30	Pre-ex, grid 100/130 (north)	2
31	Pre-ex, grid 110/130 (south)	2
32	Pre-ex, grid 110/130 (south)	2
33	Pre-ex 004	2
34	Pre-ex 004	2
35	Pre-ex 005	2
36	Pre-ex 005	2
37	Mid-ex 003, 006, 007	3-1

COLOUR PRINT 2		
No.	Description	Plan (-Section) no.
1	Film ID	
2	Mid-ex, 003, 006, 007	3-1
3	Mid-ex, 003, 006, 007	3-1
4	Mid-ex, 004, 008	3-2
5	Mid-ex, 004, 008	3-2
6	Post-ex, 003	8
7	Post-ex, 003	8
8	Mid-ex 009	4-6
9	Mid-ex 005	5-3
10	Mid-ex 005	5-3
11	Pre-ex, 016	2
12	Pre-ex, 016	2
13	Pre-ex, 015	2
14	Pre-ex, 015	2
15	Mid-ex, 016	3-5
16	Mid-ex, 016	3-5
17	Mid-ex, 014, 015, 017	3-4
18	Mid-ex, 014, 015, 017	3-4
19	Pre-ex, 018	2
20	Pre-ex, 018	2
21	Pre-ex, 023	2
22	Pre-ex, 023	2
23	Pre-ex, 024	2
24	Pre-ex, 024	2
25	Pre-ex, 026	2
26	Pre-ex, 026	2
27	Pre-ex, 025	2
28	Pre-ex, 025	2
29	Mid-ex, 026, 027	5-10
30	Mid-ex, 026, 027	5-10
31	Mid-ex, 018, 022	4-7
32	Mid-ex, 018, 022	4-7
33	Mid-ex, 023	5-8
34	Mid-ex, 024, 029	3-9
35	Pre-ex, 034, 035, 096	2
36	Pre-ex, 032	2
37	Pre-ex, 040, 041	2

COLOUR PRINT 3		
No.	Description	Plan (-Section) no.
1	Void	
2	Film ID	
3	Pre-ex, 051-057	2
4	Pre-ex, 051-057	2
5	Pre-ex, 051-058	2
6	Pre-ex, 051-058	2
7	Pre-ex, 043, 045, 047, 049	2
8	Pre-ex, 043, 045, 047, 049	2
9	Pre-ex, 061	2
10	Pre-ex, 061	2
11	Mid-ex, 051, 064	3-11
12	Mid-ex, 051, 064	3-11
13	Mid-ex, 051, 064	3-11
14	Pre-ex, 062	2
15	Pre-ex, 062	2
16	Pre-ex, 042, 043	2
17	Pre-ex, 042, 043	2
18	Mid-ex, 062	6-15
19	Mid-ex, 062	6-15
20	Mid-ex, 036, 039	6-12
21	Mid-ex, 036, 039	6-12
22	Mid-ex, 038	6-13
23	Mid-ex, 038	6-13
24	Mid-ex, 037	6-14
25	Mid-ex, 037	6-14
26	Mid-ex, 068, 071	7-18
27	Mid-ex, 068, 071	7-18
28	Mid-ex, 069, 071	7-18
29	Mid-ex, 069, 071	7-18
30	Mid-ex, 072, 073	7-41
31	Mid-ex, 065, 066	5-20
32	Mid-ex, 065, 066	5-20
33	Mid-ex, 072, 075	7-21
34	Mid-ex, 072, 075	7-21
35	Mid-ex, 072, 075	7-21
36	Mid-ex, 072, 075	7-21
37	Mid-ex, 040, 070	7-17

COLOUR PRINT 4		
No.	Description	Plan (-Section) no.
1	Film ID	
2	Mid-ex, 040, 070	7-17
3	Mid-ex, 079, 080	7-25
4	Mid-ex, 079, 080	7-25
5	Pre-ex, 081	2
6	Pre-ex, 081	2
7	Mid-ex, 077	6-27
8	Mid-ex, 077	6-27
9	Mid-ex, 044, 045	5-26
10	Mid-ex, 044, 045	5-26
11	Mid-ex, 061	5-22
12	Mid-ex, 061	5-22
13	Mid-ex, 054, 084	3-28
14	Mid-ex, 054, 084	3-28
15	Pre-ex, 082, 083, 089	2
16	Pre-ex, 082, 083, 089	2
17	Pre-ex, 090	2
18	Pre-ex, 090	2
19	Mid-ex, 081, 086	5-29
20	Mid-ex, 081, 086	5-29
21	Mid-ex, 053, 094	3-35
22	Mid-ex, 053, 094	3-35
23	Mid-ex, 055, 096	3-36
24	Mid-ex, 055, 096	3-36
25	Mid-ex, 090, 095	5-32
26	Mid-ex, 090, 095	5-32
27	Mid-ex, 046, 047, 097	6-33
28	Mid-ex, 046, 047, 097	6-33
29	Pre-ex, grid 70/110 (south)	2
30	Pre-ex, grid 70/110 (south)	2
31	Pre-ex, grid 70/110 (north)	2
32	Pre-ex, grid 70/110 (north)	2
33	Pre-ex, grid 70/120 (south)	2
34	Pre-ex, grid 70/120 (south)	2
35	Pre-ex, grid 70/120 (north)	2
36	Pre-ex, grid 70/120 (north)	2
37	Pre-ex, grid 60/120	2

COLOUR PRINT 5		
No.	Description	Plan (-Section) no.
1	Pre-ex, grid 60/120	2
2	Film ID	
3	Pre-ex, 098-103	2
4	Pre-ex, 098-103	2
5	Mid-ex, 050, 104	5-38
6	Mid-ex, 050, 104	5-38
7	Pre-ex, 049, 108	2
8	Pre-ex, 049, 108	2
9	Mid-ex, 099, 110	7-40
10	Mid-ex, 099, 110	7-40
11	Mid-ex, 098, 109	7-39
12	Mid-ex, 098, 109	7-39
13	Mid-ex, 048, 049	7-46
14	Mid-ex, 048, 049	7-46
15	Pre-ex, 115, 116	2
16	Pre-ex, 115, 116	2
17	Mid-ex, 115, 116	4-43
18	Mid-ex, 115, 116	4-43
19	Mid-ex, 100, 101	7-44, 7-45
20	Mid-ex, 100, 101	7-44, 7-45
21	Mid-ex, 056, 119	3-48
22	Pre-ex, 121	2
23	Pre-ex, 121	2
24	Mid-ex, 057, 120	3-49
25	Working shot	
26	Working shot	
27	Working shot	
28	Post-ex, 031, 122	8
29	Post-ex, 031, 122	8
30	Mid-ex, 113, 114	4-42
31	Mid-ex, 113, 114	4-42
32	Pre-ex, 058	2
33	Pre-ex, 058	2
34	Pre-ex, 127	2
35	Pre-ex, 127	2
36	Mid-ex, 107, 108	7-52
37	Mid-ex, 107, 108	7-52

COLOUR PRINT 6		
No.	Description	Plan (-Section) no.
1	Film ID	
2	Pre-ex, 154	2
3	Pre-ex, 154	2
4	Mid-ex, 148, 149	11-64
5	Mid-ex, 148, 149	11-64
6	Mid-ex, 150, 151	11-65
7	Mid-ex, 150, 151	11-65
8	Mid-ex, 152, 153	11-63
9	Mid-ex, 152, 153	11-63
10	Pre-ex, 155	2
11	Pre-ex, 155	2
12	Pre-ex, grid 110/140 (south)	2
13	Pre-ex, grid 110/140 (south)	2
14	Pre-ex, grid 110/140 (north)	2
15	Pre-ex, grid 110/140 (north)	2
16	Pre-ex, grid 100/140 (south)	2
17	Pre-ex, grid 100/140 (south)	2
18	Pre-ex, grid 100/140 (north)	2
19	Pre-ex, grid 100/140 (north)	2
20	Pre-ex, grid 100/140	2
21	Void	
22	Pre-ex, grid 100/140	2
23	Mid-ex, 158, 159	11-67
24	Mid-ex, 158, 159	11-67
25	Pre-ex, 160	2
26	Pre-ex, 160	2
27	Mid-ex, 160, 161	11-68
28	Mid-ex, 160, 161	11-68
29	Pre-ex, grid 110/120, 110/130	2
30	Pre-ex, grid 110/120, 110/130	2
31	Pre-ex, 164	2
32	Pre-ex, 164	2
33	Mid-ex, 163, 164	10-71
34	Mid-ex, 163, 164	10-71
35	Pre-ex, 172-175	2
36	Pre-ex, 172-175	2
37	Pre-ex, 172-175	2

COLOUR PRINT 7		
No.	Description	Plan (-Section) no.
1	Pre-ex, 172-175	2
2	Film ID	
3	Pre-ex, 181-185	2
4	Pre-ex, 181-185	2
5	Pre-ex, 177-179	2
6	Pre-ex, 177-179	2
7	Pre-ex, 166	2
8	Pre-ex, 166	2
9	Mid-ex, 172, 186	11-72
10	Mid-ex, 172, 186	11-72
11	Mid-ex, 173, 187	11-73
12	Mid-ex, 173, 187	11-73
13	Mid-ex, 175, 188	11-74
14	Mid-ex, 175, 188	11-74
15	Mid-ex, 181, 189	12-75
16	Mid-ex, 181, 189	12-75
17	Mid-ex, 165, 166	12-81
18	Mid-ex, 165, 166	12-81
19	Mid-ex, 167-170	10-69
20	Mid-ex, 167-170	10-69
21	Pre-ex, 194	2
22	Pre-ex, 195	2
23	Pre-ex, 195	2
24	Mid-ex, 177, 178	
25	Mid-ex, 177, 178	
26	Pre-ex, 200, 212	2
27	Pre-ex, 198, 199	2
28	Mid-ex, 206, 207	15-95
29	Mid-ex, 201, 208	15-95
30	Mid-ex, 203, 210	15-93
31	Mid-ex, 202, 209	15-91
32	Mid-ex, 194, 196, 213	14-84
33	Mid-ex, 194, 196, 213	14-84
34	Mid-ex, 195, 197	14-82
35	Pre-ex 179	2
36	Mid-ex, 165, 166	12-88
37	Mid-ex, 165, 166	12-88

COLOUR PRINT 8		
No.	Description	Plan (-Section) no.
1	Pre-ex 017	2
2	Film ID	
3	Mid-ex, 223, 224	12-90
4	Mid-ex, 017, 226	3-4
5	Site 118, Colour Print 1	
6	Site 118, Colour Print 1	
7	Site 118, Colour Print 1	
8	Site 118, Colour Print 1	
9	Site 118, Colour Print 1	
10	Site 118, Colour Print 1	
11	Site 118, Colour Print 1	
12	Site 118, Colour Print 1	
13	Site 118, Colour Print 1	
14	Site 118, Colour Print 1	
15	Site 118, Colour Print 1	
16	Site 118, Colour Print 1	
17	Site 118, Colour Print 1	
18	Site 118, Colour Print 1	
19	Site 118, Colour Print 1	
20	Site 118, Colour Print 1	
21	Site 118, Colour Print 1	
22	Site 118, Colour Print 1	
23	Site 118, Colour Print 1	
24	Site 118, Colour Print 1	
25	Site 118, Colour Print 1	
26	Site 118, Colour Print 1	
27	Site 118, Colour Print 1	
28	Site 118, Colour Print 1	
29	Site 118, Colour Print 1	
30	Site 118, Colour Print 1	
31	Site 118, Colour Print 1	
32	Site 118, Colour Print 1	
33	Site 118, Colour Print 1	
34	Site 118, Colour Print 1	
35	Site 118, Colour Print 1	
36	Site 118, Colour Print 1	
37	Site 118, Colour Print 1	

COLOUR PRINT 9		
No.	Description	Plan (-Section) no.
1	Site 118, Colour Print 2	
2	Site 118, Colour Print 2	
3	Site 118, Colour Print 2	
4	Site 118, Colour Print 2	
5	Site 118, Colour Print 2	
6	Site 118, Colour Print 2	
7	Site 118, Colour Print 2	
8	Site 118, Colour Print 2	
9	Site 118, Colour Print 2	
10	Site 118, Colour Print 2	
11	Pre, ex 227	2
12	Mid-ex, 178, 179, 180	13-86
13	Mid-ex, 227	7-97
14	Pre-ex, 230	2
15	Pre-ex, 233	2
16	Mid-ex, 230, 231, 235	13-98
17	Mid-ex, 216, 219, 228, 229	17, 13-104
18	Mid-ex, 233, 234	12-99
19	Pre-ex, 242	2
20	Post-ex, 013, 105	8
21	Mid-ex, 242, 243	12-101
22	Mid-ex, 240, 241	15-103
23	Mid-ex, 238, 239	15-102
24	Post-ex, 172, 173	8
25	Post-ex, 008, 121	8
26	Mid-ex, 198, 199, 216-219, 228, 229	17, 13-104
27	Mid-ex, 198, 199, 216-219, 228, 229	17, 13-104
28	Mid-ex, 244-247	16-100
29	Mid-ex, 244-247	16-100
30	Post-ex, 003, 014	8
31	Post-ex, 003, 014	8
32	Post-ex, 003, 008, 014, 021	8
33	Post-ex, 027, 042, 044, 046, 048, 107, 191	8
34	Post-ex, 027, 042, 044, 046, 048, 107, 191	8
35	Post-ex, 045, 176	8
36	Post-ex, 189- 191	8
37	Post-ex, 064, 076, 094	8

FIGURES & PLATES

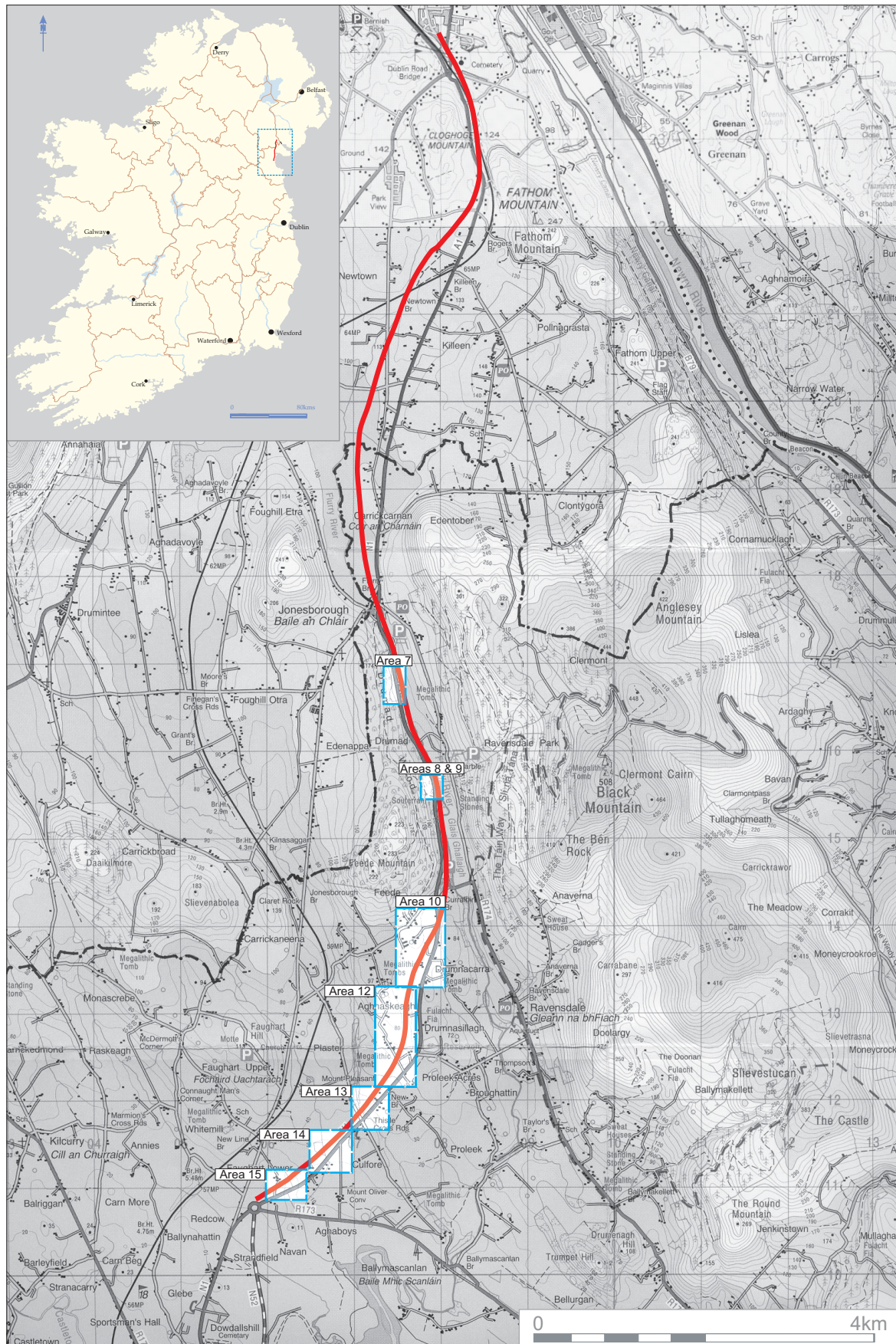


Fig. 1 Location plan for A1/N1.

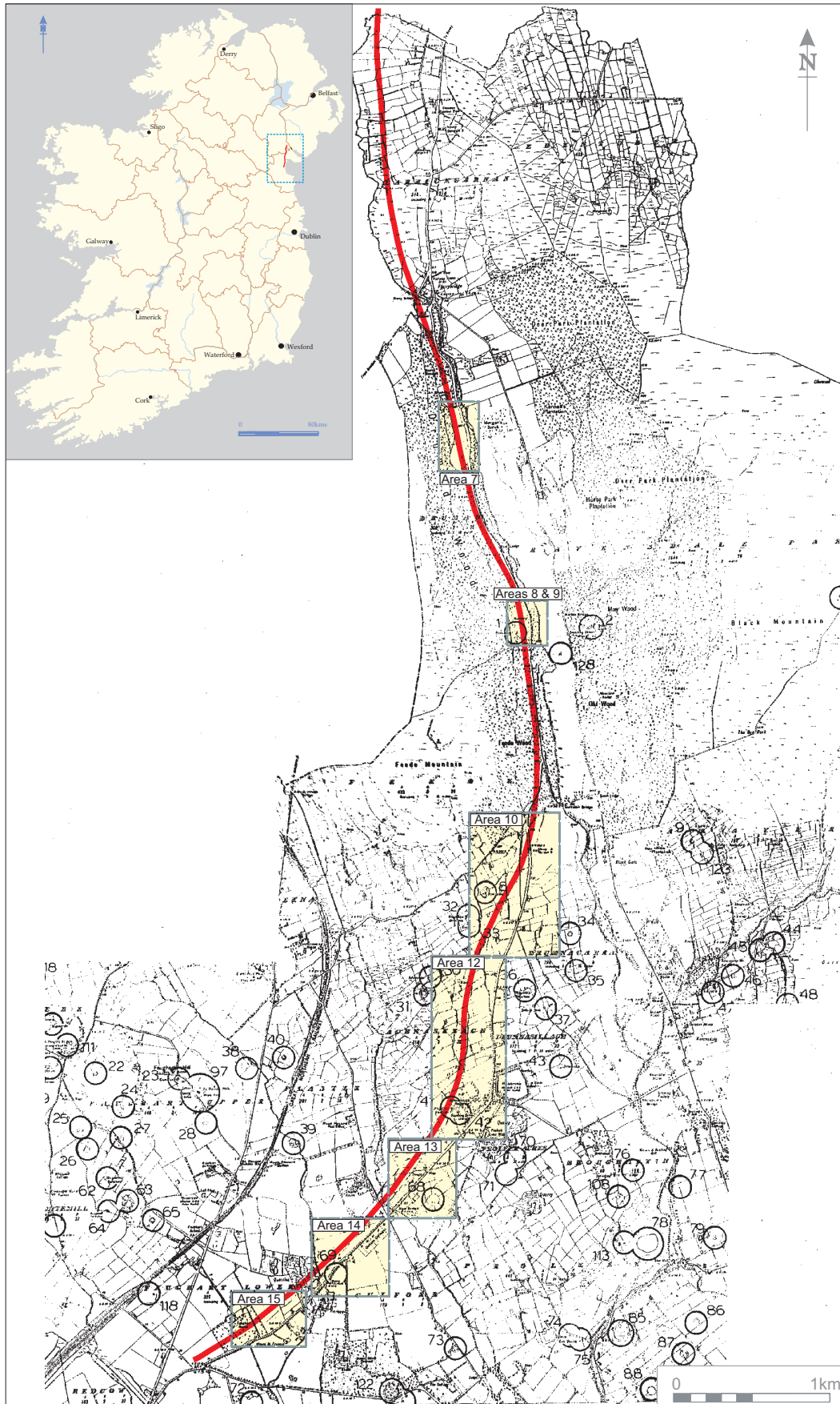


Fig. 2 Extract from RMP Maps of Louth, Sheets 1 & 4. A1/N1 in red. Scale as indicated.

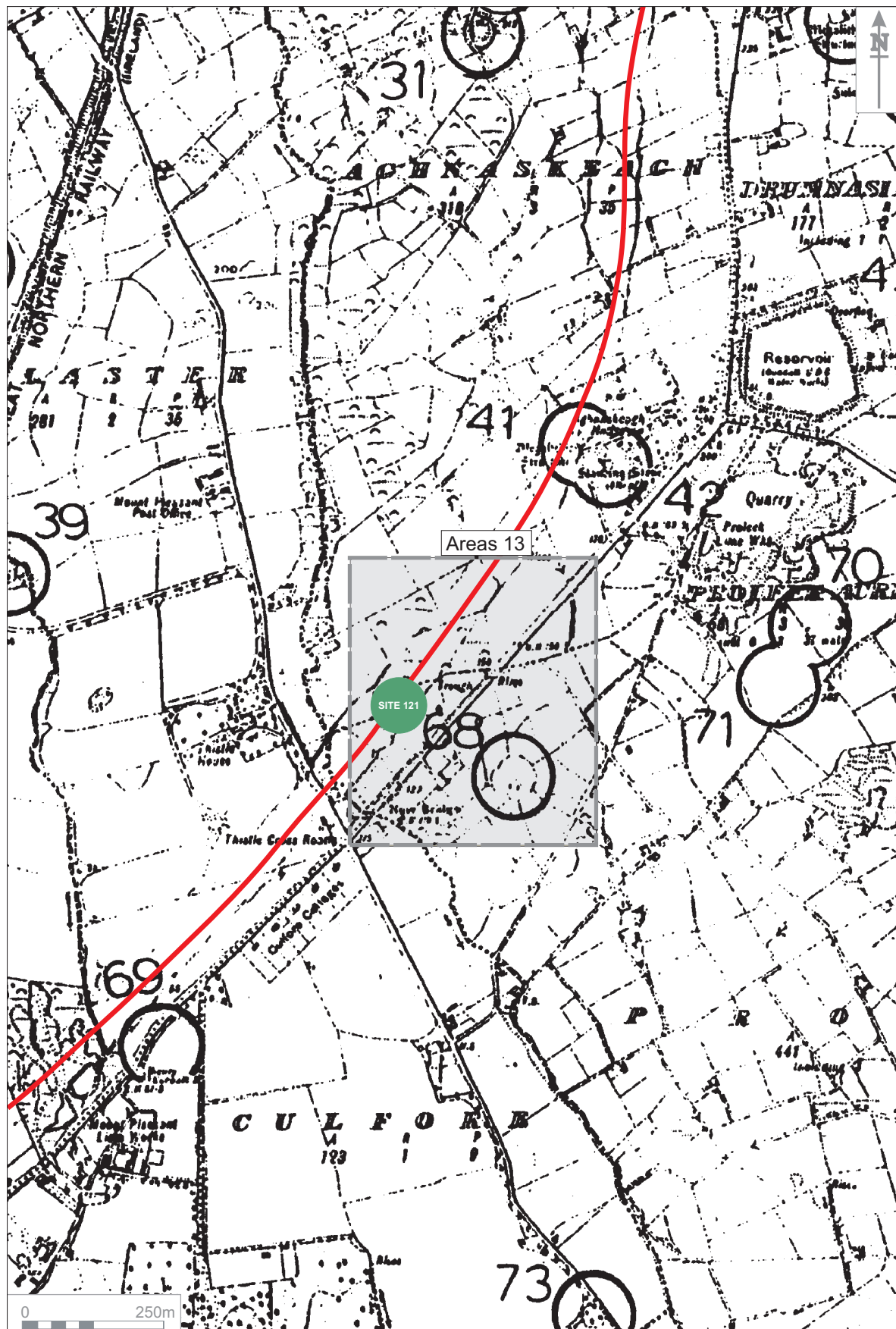


Fig. 3 Location of Area 13 and Site 121 on RMP Map of Louth, Sheet 4. A1/N1 in red. Scale 1:10,000.

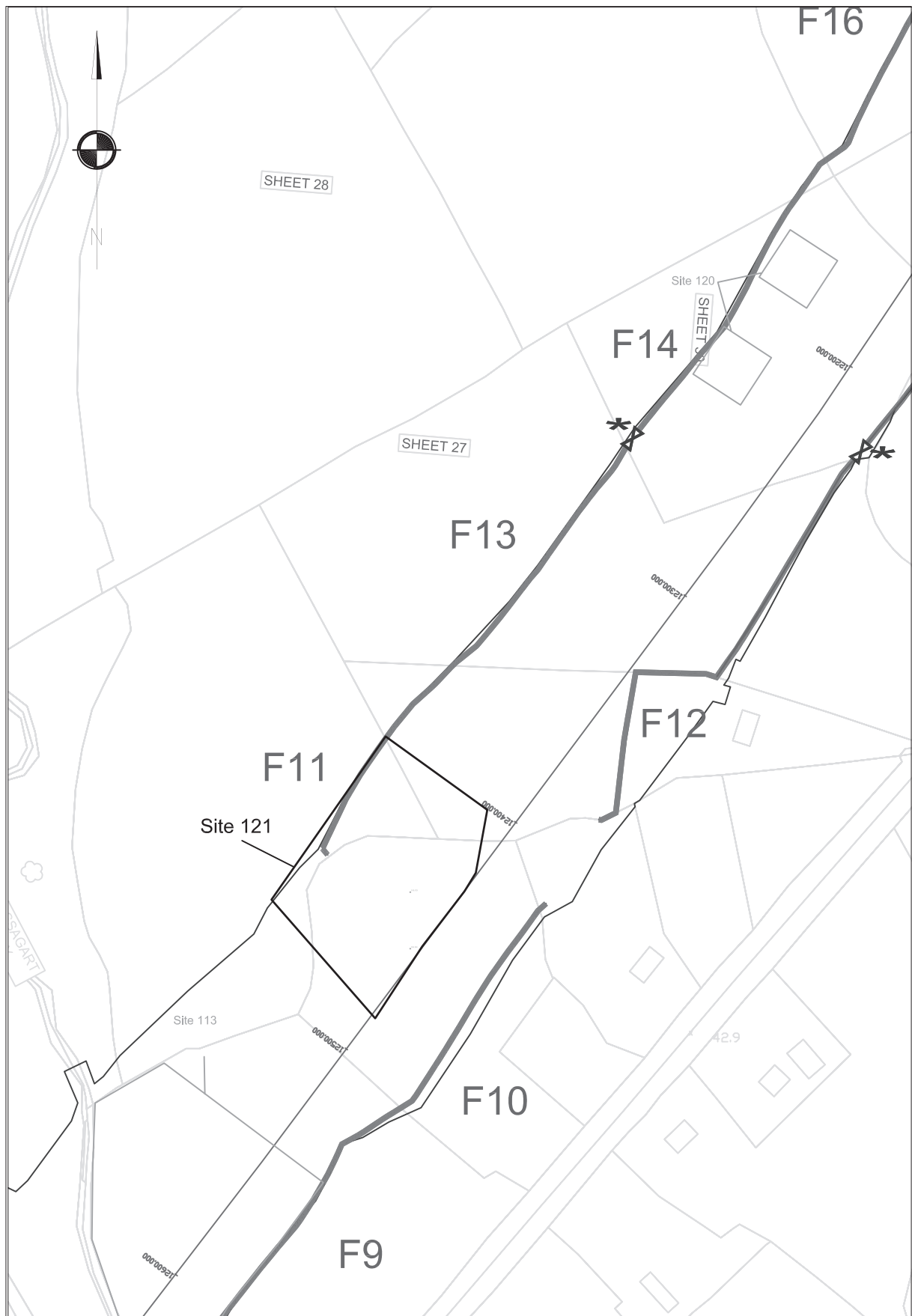


Fig. 4 Plan showing Area 13 and Site 121. Scale 1:2,000.

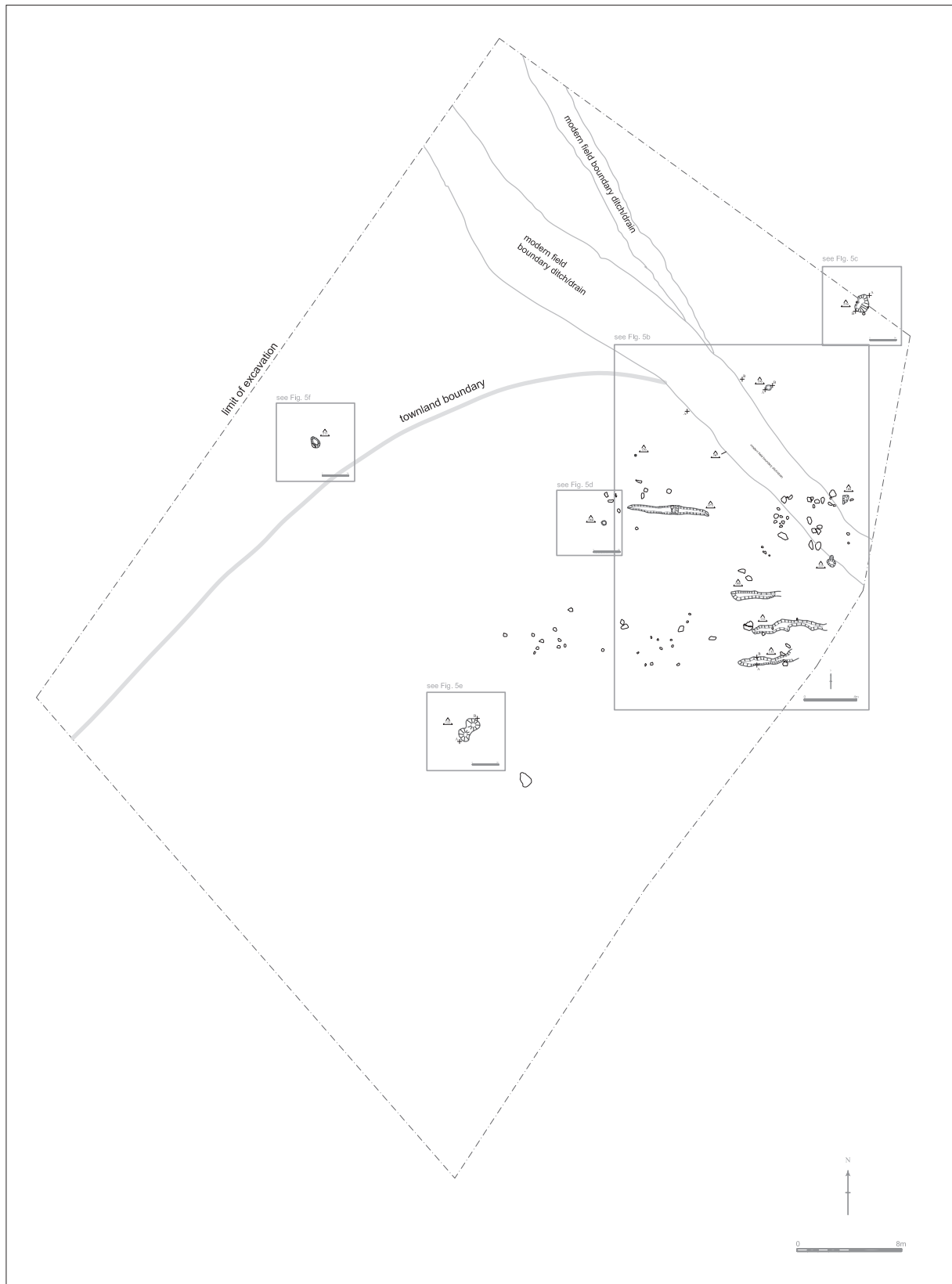


Fig. 5a Plan of site showing main features (stone sockets not shown) Site 121. Scale 1:500.



Fig. 5b Detail of site. Scale 1:100.

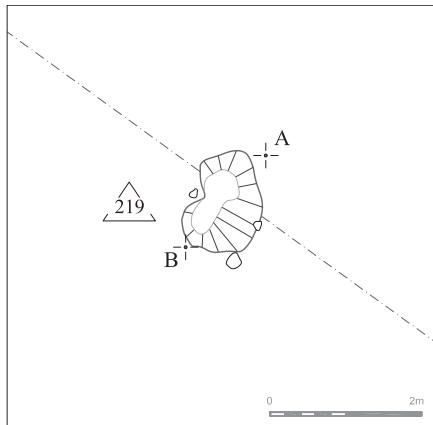


Fig. 5c Detail of site. Scale 1:100

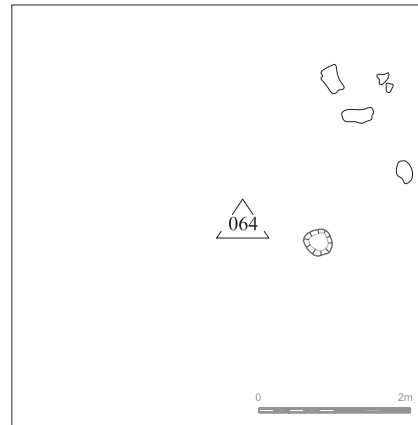


Fig. 5d Detail of site. Scale 1:100

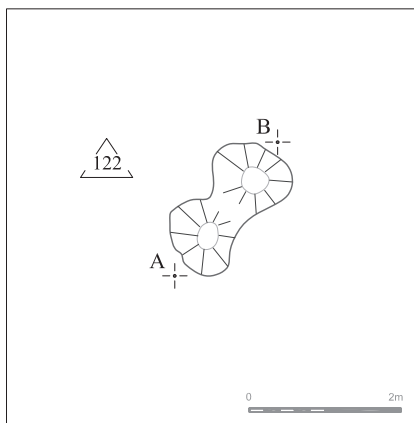


Fig. 5e Detail of site. Scale 1:100

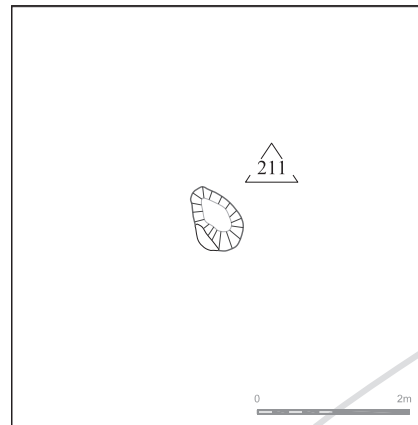
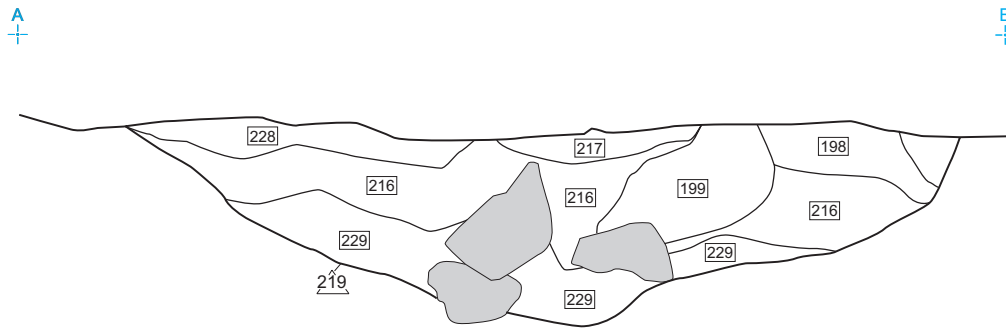
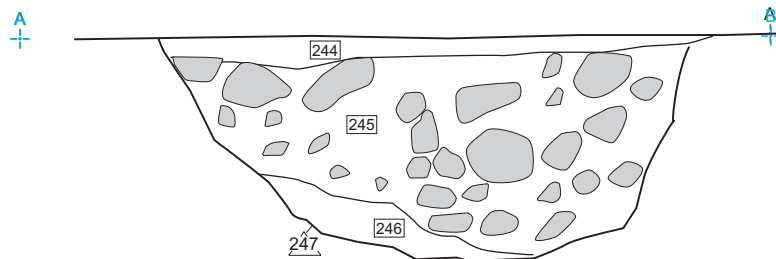


Fig. 5f Detail of site. Scale 1:100

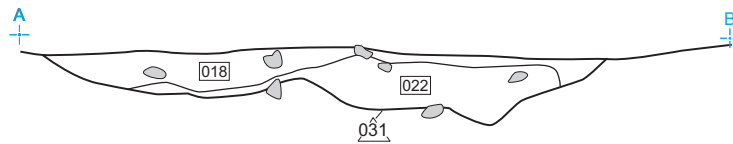
Northwest facing section, Pit 219



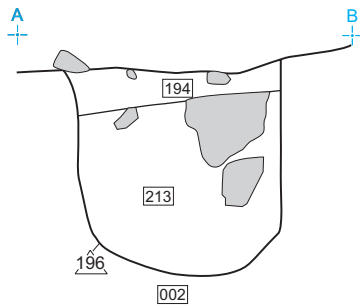
East facing section, Ditch 247



Southeast facing section, 031



South facing section, 196



East facing section, Plough furrow 133

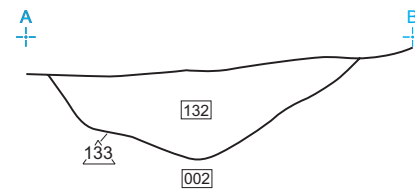


Fig. 6 Sections.



Plate 1 Grid 100E 120N pre-excavation.

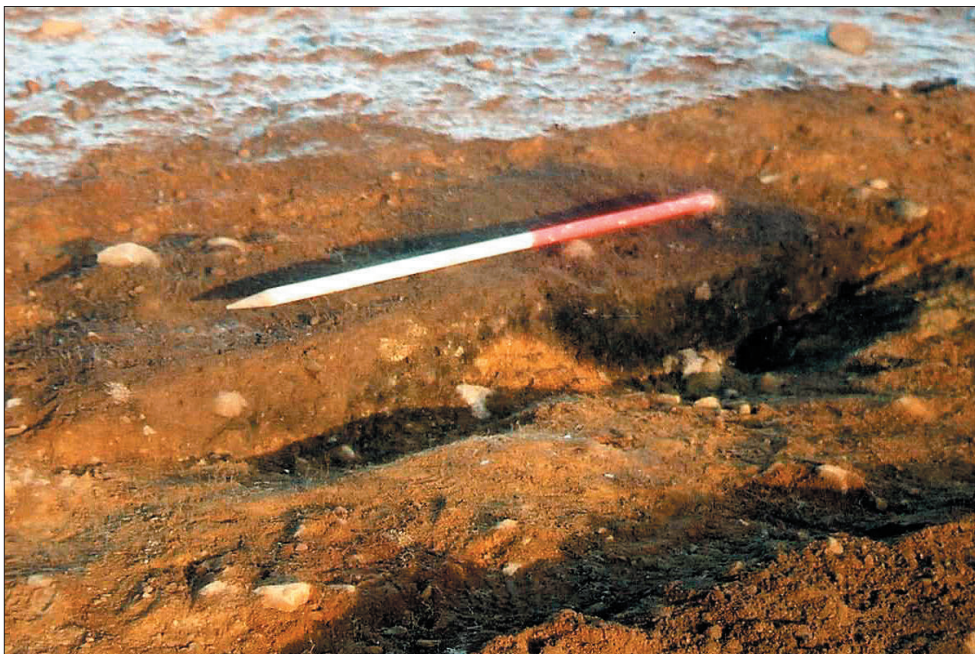


Plate 2 Grain dryer 031-122.



Plate 3 Probable grain dryer 219.